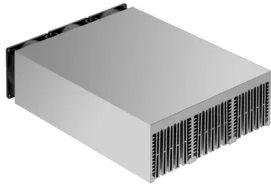


# Data sheet Product LA 11 150 230

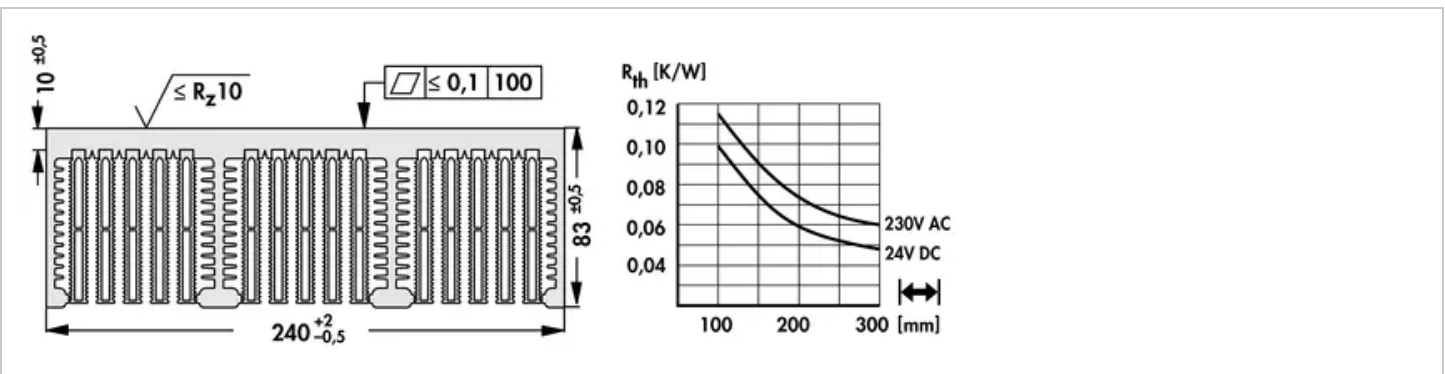


Cooling aggregates>Cooling aggregates with axial fan  
 240 x 83 mm, with axial fan

## Features

|                                     |  |
|-------------------------------------|--|
| width:                              | 240 mm   |
| height:                             | 83 mm  |
| length:                             | 150 mm   |
| thermal resistance:                 | 0.115 - 0.048 K/W  |
| surface:                            | <ul style="list-style-type: none"> <li>aluminium natural/degreased/cutting edges not deburred (by the metre not degreased/cutting edges not deburred)</li> <li>mounting area(s) milled flat</li> </ul> |
| operating voltage of the fan motor: | <ul style="list-style-type: none"> <li>24 V DC</li> <li>230 V AC</li> </ul>  |

## Technical Drawing



## Fan

|             |                |
|-------------|----------------|
| type:       | ebmpapst 8556N |
| dimensions: | 80x80x38 mm    |

|                                  |  |
|----------------------------------|--|
| tension:                         | <b>230 V AC</b>                            |
| power inout:                     | <b>12 W</b>                                |
| max. air volume:                 | <b>50 m<sup>3</sup>/h</b>                  |
| temperature range:               | <b>-40°C... +90°C</b>                      |
| noise level:                     | <b>31 dB(A)</b>                            |
| speed:                           | <b>2,800 min<sup>-1</sup></b>              |
| weight:                          | <b>490 g</b>                               |
| failure rate (L <sub>10</sub> ): | <b>L<sub>10</sub> &gt; 52,500 h (40°C)</b> |
| type:                            | <b>ebmpapst 8314H</b>                      |
| dimensions:                      | <b>80x80x32 mm</b>                         |
| tension:                         | <b>24 V DC</b>                             |
| power inout:                     | <b>6 W</b>                                 |
| max. air volume:                 | <b>80 m<sup>3</sup>/h</b>                  |
| temperature range:               | <b>-20°C... 75°C</b>                       |
| noise level:                     | <b>48 dB(A)</b>                            |
| speed:                           | <b>5,000 min<sup>-1</sup></b>              |
| weight:                          | <b>170 g</b>                               |
| failure rate (L <sub>10</sub> ): | <b>L<sub>10</sub> &gt; 55,000 h (40°C)</b> |