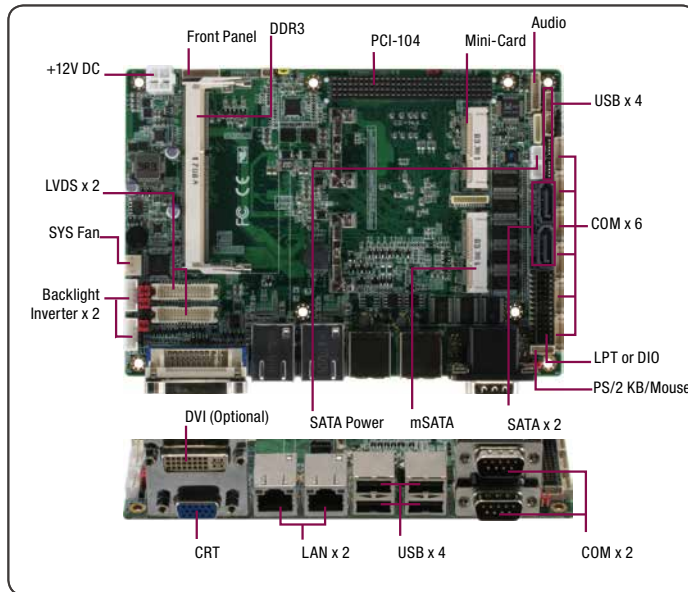


# 02 EPIC-CV07

EPIC Boards

## EPIC Board with Onboard Intel® Atom™ D2550/N2600 Processor



### Features

- Onboard Intel® Atom™ D2550/N2600 Processor
- Intel® Atom™ D2550/N2600 + NM10
- 204-pin DDR3 800 (N2600)/ 1066 (D2550) MHz SODIMM x 1, Up to 2 GB (N2600)/ 4 GB (D2550)
- Realtek 8111E for 10/1000/1000Base-TX, RJ-45 x 2
- 18/24-bit Single/Dual-Channel LVDS, CRT, DVI-I (Optional)
- 2CH HD Audio
- SATA 3.0 Gb/s x 1, mSATA/Mini-Card Slot x 1
- USB 2.0 x 7, COM x 8, 16-bit Digital I/O
- Mini-Card x 1
- +12V, AT/ATX
- CPU and PCH On Solder Side For Easy System Integration
- Supports AAEON SDK Utility: Hi-Safe

### Specifications

System	
Form Factor	EPIC board
CPU	Intel® Atom™ D2550/N2800/N2600
CPU Frequency	1.6 GHz ~ 2.13 GHz
Chipset	Intel® Atom™ D2550/N2600 + NM10
Memory Type	DDR3 800/1066 MHz
Max. Memory Capacity	Up to 4G
BIOS	AMI 4MB
Wake on LAN	Yes
Watchdog Timer	255 Level
Power Requirement	+12V
Power Supply Type	AT/ATX
Power Consumption (Typical)	—
Dimension (L x W)	4.53" x 6.50" (115mm x 165mm)
Operating Temperature	32 °F ~ 140 °F (0 °C ~ 60 °C); -4 °F ~ 158 °F (-20 °C ~ 70 °C) For WITAS 1
Storage Temperature	-40 °F ~ 176 °F (-40 °C ~ 80 °C)
Operating Humidity	10~80%, non-condensing
MTBF (Hours)	—
Certification	CE/FCC
Display	
VGA/LCD Controller	Intel® Atom™ D2550/ N2600 integrated
Video Output	CRT, LVDS, DVI (optional, need to change connector)
Backlight Inverter Supply	Max. 12V
I/O	
Ethernet	Giga LAN Realtek 8111E x 2
Audio	ALC662 co-lay ALC886/892
USB Port	USB 2.0 x 7
Serial Port	RS-232 x 7, RS-232/422/485 x 1 (COM 2)
Parallel Port	SPP/EPP/ECP x 1
HDD Interface	SATA 2.0 x 1
FDD Interface	None
SSD	mSATA
Expansion Slot	PCI-104 x 1 Mini-Card x 2 (One support mSATA) Touch Panel feature (Optional) 8 pin DIO 4 in/4out
PWM LCD Support	—
DIO	16 bit
TPM	—
Touch	Yes



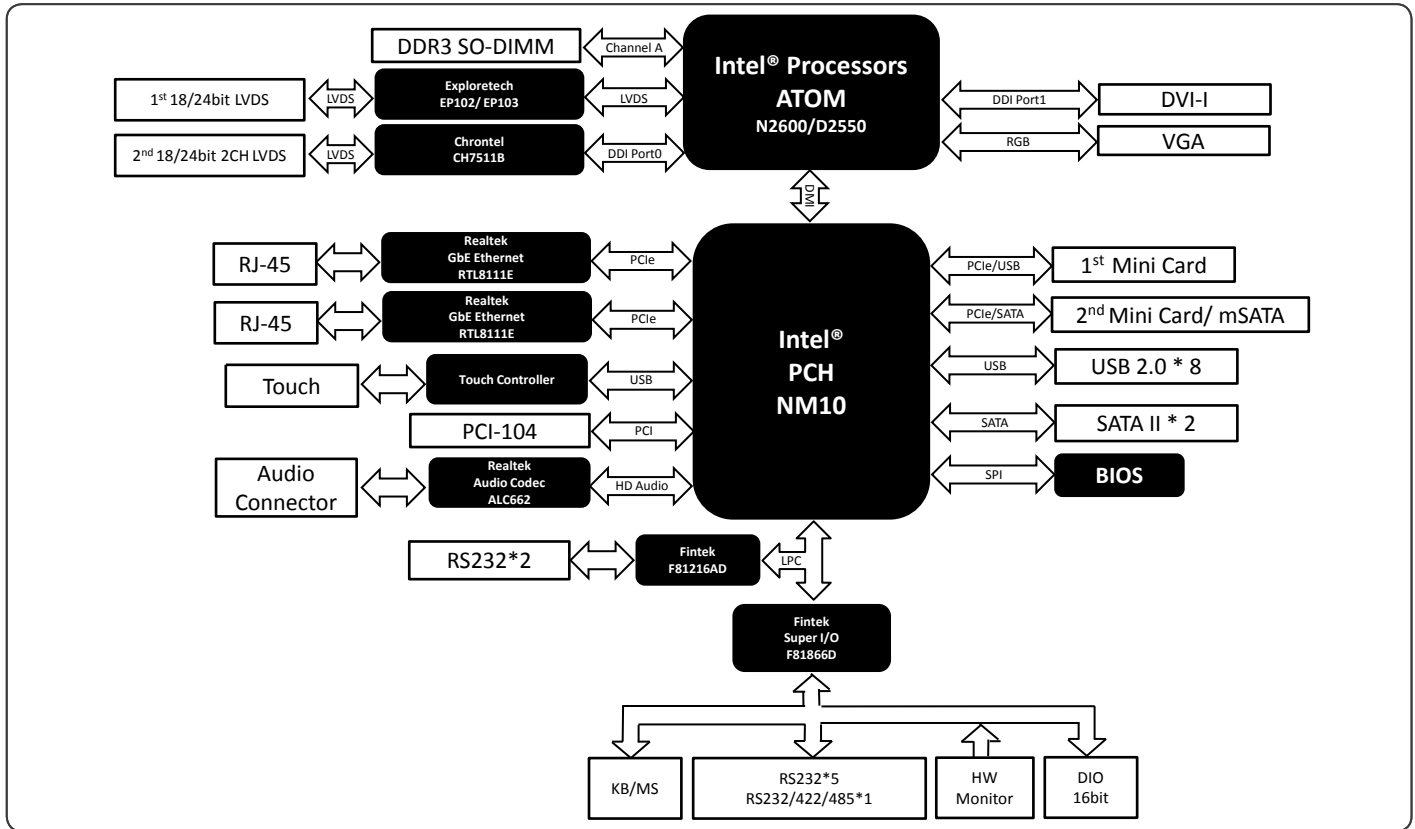
### Packing List

- 1709070500  
SATA Cable
- 1702150155  
SATA Power Cable
- 9657666600  
Jumper Cap
- M10CV0700  
Heat Spreader
- Product DVD
- EPIC-CV07

### Optional Accessories

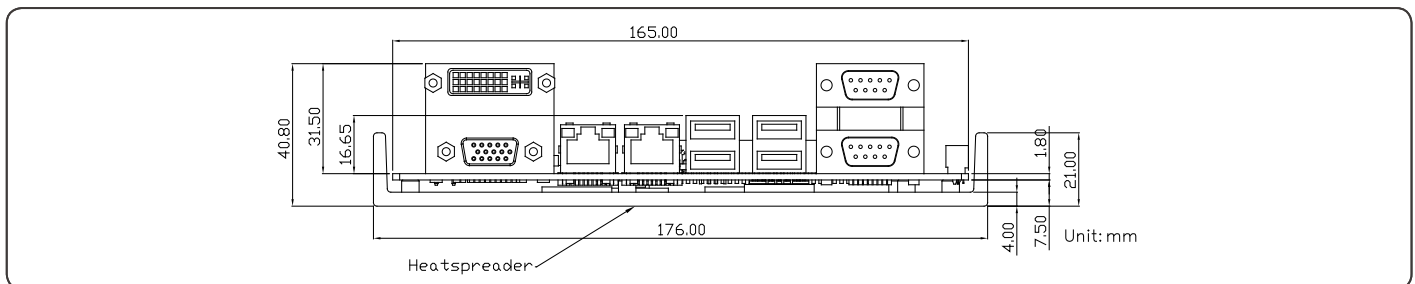
- 1701260200  
Flat Cable, 25P D-Sub Female, 26P 2.00mm Pitch Housing, 20cm
- 1700060155  
KB & PS/2 Mouse Cable, 6P Pitch=1.25mm Housing x 1, 15cm, for PFM-945C
- 1701010150  
Flat Cable, 10P Pitch=1.25mm Housing x 1, 15cm, for PFM-945C
- 1700050207  
Flat Cable for USB, 5P Pitch=1.25mm Housing x 1, 20cm, for PFM-945C
- 1701090150  
Flat Cable for COM, D-Sub 9(M), 9P Housing, 9P 1.25mm Pitch Housing, 15cm
- 1702150155  
Power Cable, 15P SATA(F), 2P 2.0mm Housing (PH), 15cm
- 1709100254  
Audio Cable, 14P Pitch=1.25mm Housing x 1, 51cm, for PFM-945C

## Block Diagram



## Dimension

Unit: mm



## Ordering Information

Part Number	CPU	Memory	Fan/Fanless	Display	LVDS	Storage	LAN	USB	RS-232	RS-232/422/485	Expansion Slot	Power	Power Temp	Others
EPIC-CV07-A10-10	Atom™ D2550	DDR3 (Max. 4 GB)	Fanless	CRT+ LVDS1, CRT+ LVDS2	LVDS1 18b 1CH, LVDS2 24b 2CH	SATA x 1, mSATA/Mini-Card x 1	GbE x 2	UBS2.0 x 7	7	1	Mini-Card x 1, PCI-104 x 1	+12V (ATX)	0°C ~ 60°C	LPT or DIO 16-bit, Audio, PS/2
EPIC-CV07-A10-11	Atom™ N2600	DDR3 (Max. 2 GB)	Fanless	CRT+ LVDS1	LVDS1 18b 1CH	SATA x 1, mSATA/Mini-Card x 1	GbE x 2	UBS2.0 x 8	5	1	Mini-Card x 1	+12V (ATX)	0°C ~ 60°C	LPT or DIO 16-bit, Audio, PS/2
EPIC-CV07W1-A10-11	Atom™ N2600	DDR3 (Max. 2 GB)	Fanless	CRT+ LVDS1	LVDS1 18b 1CH	SATA x 1, mSATA/Mini-Card x 1	GbE x 2	UBS2.0 x 8	5	1	Mini-Card x 1	+12V (ATX)	-20°C ~ 70°C	LPT or DIO 16-bit, Audio, PS/2

Note:

Intel® Atom™ Processor D2000 series and N2000 series (CV) do NOT support DMA function that may affect ECP mode of Parallel port.

Remark: \* Heatspreader Surface Temperature Under 0°C ~ 70°C