

2J6115B-868

(Datasheet)

Type	ISM/SRD860 PIFA antenna
Frequencies	ISM/SRD (868 MHz)
Mounting	Body Mount
Revision	01



P. Tipul

1. SPECIFICATION

1.1. Electrical Specifications

Frequencies	ISM/SRD (868 MHz)
Impedance	50 Ohms
Polarization	Vertical
Gain***	3 dBi
VSWR*	<1.5:1
Power handling	50W
Operating temperature	-40°C to +85°C

* Measured on 30x30cm ground plane

** Depends on ground plane size

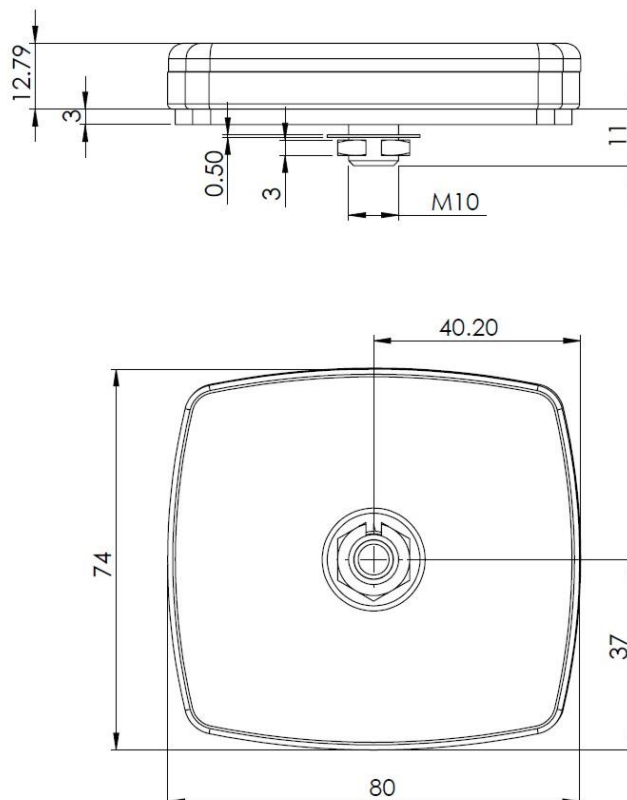
1.2. Connection Specifications

Connector type: SMA male
 Cable: RG174U
 Cable length: Upon request

For different cable length and connector type ask our sales team.

1.3. Mechanical Specifications and Dimensions

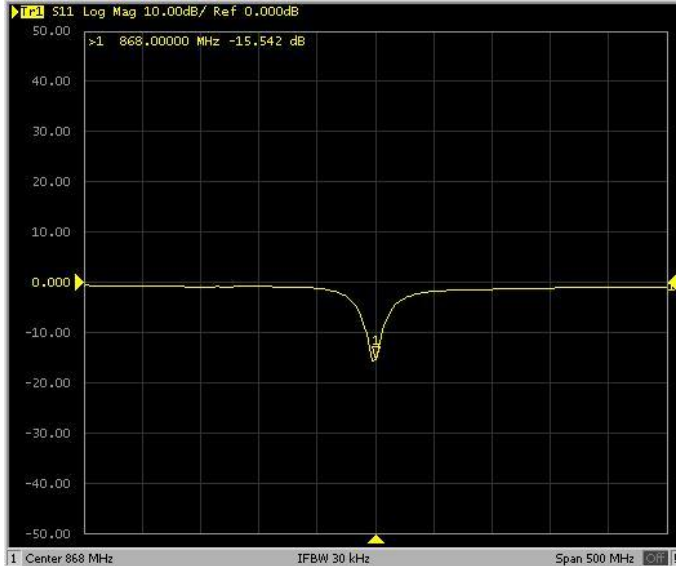
Material: ABS
 Max. dimensions: 15.79 mm x 80 mm x 74 mm
 Weight: 95 g 'weight counted with connection above'
 Colour: Black (for different colours please ask our sales team)



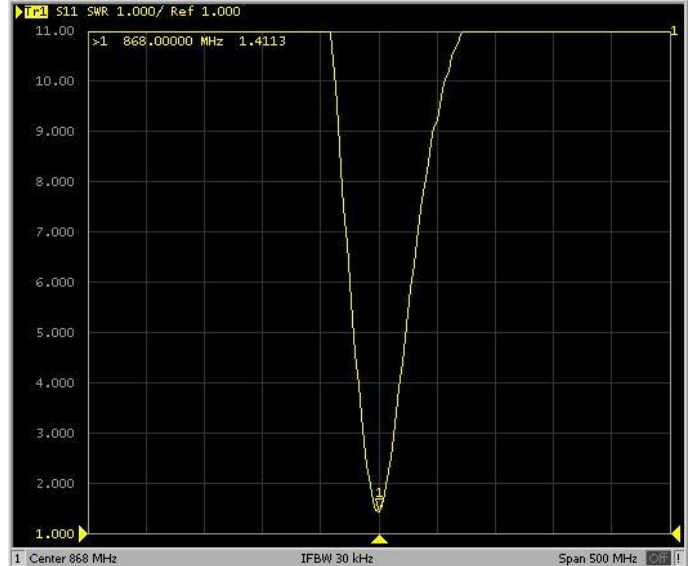
2. MEASUREMENT

- Measured with 15cm cable
- Antenna placed on 30x30cm ground plane

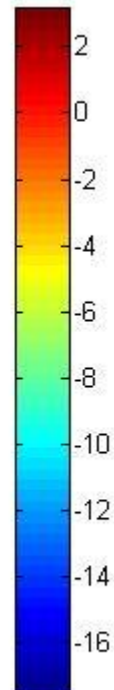
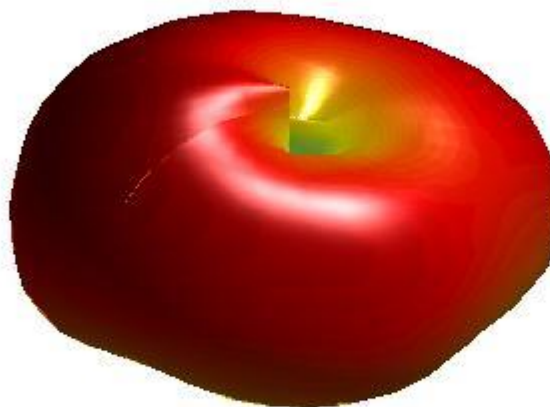
Log Mag (ISM 868MHz)



VSWR (ISM 868MHz)



3D radiation pattern
Freq = 0.8680GHz Az= 45 EL= 45



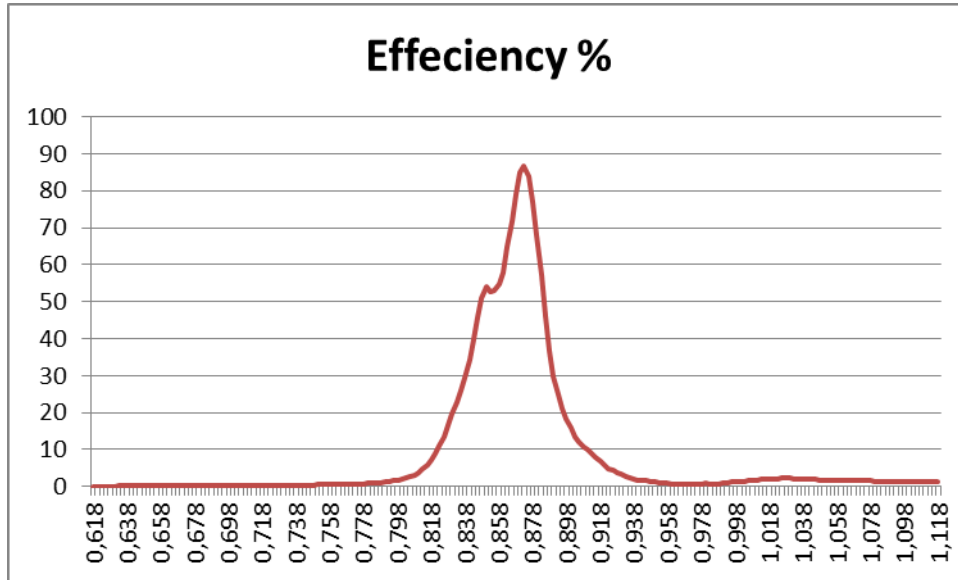


Figure 1 - Antenna efficiency (%)

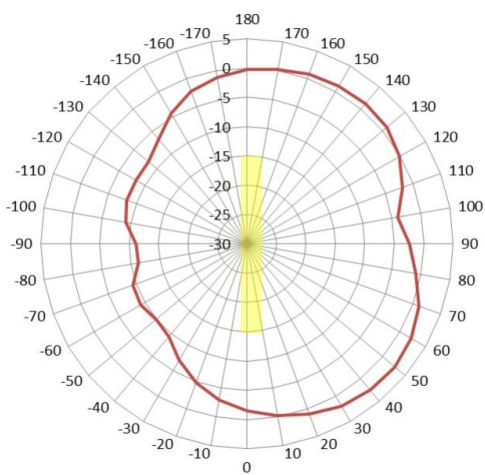


Figure 2 - Elevation (0-180 Top side)

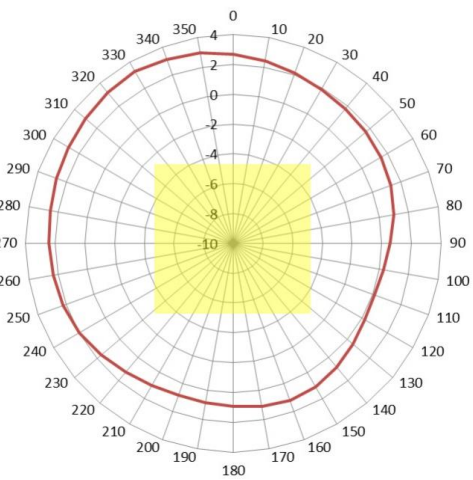


Figure 3 - Azimuth

3. IMAGES

