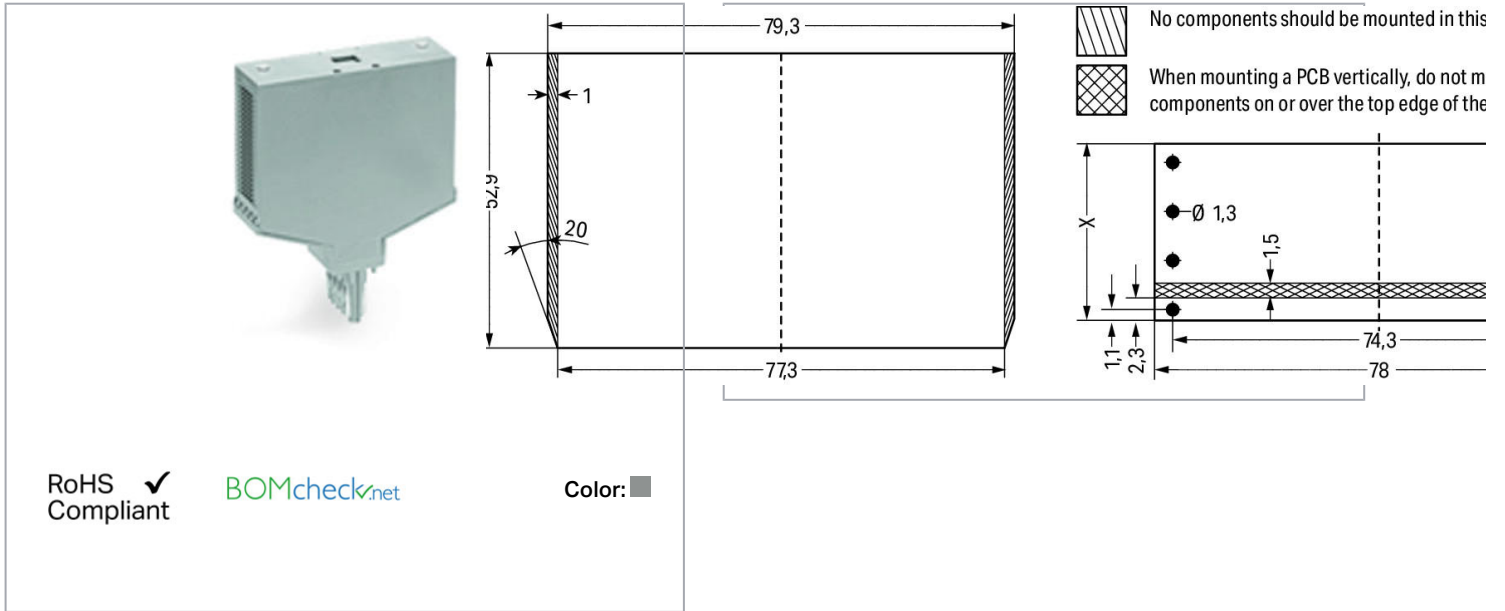


Data sheet | Item number: 786-103

Empty component plug housing; Type 16; 25 mm wide; 10-pole; gray

www.wago.com/786-103



h	15	20	25
height	9.2	14.2	19.2
height of PCB	13	18	23

Item description

Empty component plug housing, type 16

Data

Electrical data

Rated continuous current

6 A

Subject to changes. Please also observe the further product documentation!

WAGO Kontakttechnik GmbH & Co. KG
Hansastr. 27
32423 Minden
Phone: +49571 887-0 | Fax: +49571 887-169
Email: info.de@wago.com | Web: www.wago.com

Do you have any questions about our products?
We are always happy to take your call at +49 (571) 887-44222.

Safety and protection

Rated voltage	250 V
Rated surge voltage	4 kV
Pollution degree	3

Connection data

Pole No.	10
----------	----

Physical data

Width	25 mm / 0.984 inch
Height from upper-edge of DIN-rail	82.5 mm / 3.243 inch
Depth	84 mm / 3.307 inch

Mechanical data

Housing design	Plug for carrier terminal blocks
Mounting type	Pluggable module for receptacle terminal blocks

Material data



Color	gray
Fire load	0.945 MJ
Weight	41.2 g

Commercial data

Product Group	6 (Interface Electronics)
Packaging type	BOX
Country of origin	DE
GTIN	4050821082354
Customs tariff number	85366990990

Compatible products

General accessories

	Item no.: 280-629 Terminal block for pluggable modules; 10-pole; with 4-conductor terminal blocks; with orange separator; for DIN-rail 35 x 15 and 35 x 7.5; 2.5 mm ² ; CAGE CLAMP®; 2,50 mm ² ; gray	www.wago.com/280-629
	Item no.: 280-639 Terminal block for pluggable modules; 10-pole; with 2-conductor terminal blocks; with orange separator; for DIN-rail 35 x 15 and 35 x 7.5; 2.5 mm ² ; CAGE CLAMP®; 2,50 mm ² ; gray	www.wago.com/280-639

Subject to changes. Please also observe the further product documentation!

**Item no.: 280-765**

Terminal block for pluggable modules; 10-pole; with 4-conductor terminal blocks; with marker carrier; with orange separator; for DIN-rail 35 x 15 and 35 x 7.5; 2.5 mm²; CAGE CLAMP®; 2,50 mm²; gray www.wago.com/280-765

Marking accessories**Item no.: 209-501**

WSB marking card; as card; not stretchable; plain; snap-on type; white

www.wago.com/209-501

**Item no.: 209-501/000-002**

WSB marking card; as card; not stretchable; plain; snap-on type; yellow

www.wago.com/209-501/000-002

**Item no.: 209-501/000-005**

WSB marking card; as card; not stretchable; plain; snap-on type; red

www.wago.com/209-501/000-005

**Item no.: 209-501/000-006**

WSB marking card; as card; not stretchable; plain; snap-on type; blue

www.wago.com/209-501/000-006

**Item no.: 209-501/000-007**

WSB marking card; as card; not stretchable; plain; snap-on type; gray

www.wago.com/209-501/000-007

**Item no.: 209-501/000-012**

WSB marking card; as card; not stretchable; plain; snap-on type; orange

www.wago.com/209-501/000-012

**Item no.: 209-501/000-017**

WSB marking card; as card; not stretchable; plain; snap-on type; light green

www.wago.com/209-501/000-017

**Item no.: 209-501/000-023**

WSB marking card; as card; not stretchable; plain; snap-on type; green

www.wago.com/209-501/000-023

**Item no.: 209-501/000-024**

WSB marking card; as card; not stretchable; plain; snap-on type; violet

www.wago.com/209-501/000-024

**Item no.: 209-701**

WSB marking card; as card; not stretchable; plain; snap-on type; white

www.wago.com/209-701

**Item no.: 209-701/000-002**

WSB marking card; as card; not stretchable; plain; snap-on type; yellow

www.wago.com/209-701/000-002

**Item no.: 209-701/000-005**

WSB marking card; as card; not stretchable; plain; snap-on type; red

www.wago.com/209-701/000-005

**Item no.: 209-701/000-006**

WSB marking card; as card; not stretchable; plain; snap-on type; blue

www.wago.com/209-701/000-006

Subject to changes. Please also observe the further product documentation!

WAGO Kontakttechnik GmbH & Co. KG

Hansastr. 27

32423 Minden

Phone: +49571 887-0 | Fax: +49571 887-169

Email: info.de@wago.com | Web: www.wago.com

Do you have any questions about our products?

We are always happy to take your call at +49 (571) 887-44222.



Item no.: 209-701/000-007
WSB marking card; as card; not stretchable; plain; snap-on type; gray

www.wago.com/209-701/000-007



Item no.: 209-701/000-012
WSB marking card; as card; not stretchable; plain; snap-on type; orange

www.wago.com/209-701/000-012



Item no.: 209-701/000-017
WSB marking card; as card; not stretchable; plain; snap-on type; light green

www.wago.com/209-701/000-017



Item no.: 209-701/000-023
WSB marking card; as card; not stretchable; plain; snap-on type; green

www.wago.com/209-701/000-023



Item no.: 209-701/000-024
WSB marking card; as card; not stretchable; plain; snap-on type; violet

www.wago.com/209-701/000-024

tools



Item no.: 210-492
Unlocking pliers for component plug housing

www.wago.com/210-492

Downloads

Documentation

Additional Information

Disposal; Electrical and electronic equipment, Packaging	V 1.0.0	pdf 265.8 kB	Download
--	---------	-----------------	----------

CAD/CAE-Data

CAD data

2D/3D Models 786-103	URL	Download
----------------------	-----	----------

CAE data

EPLAN Data Portal 786-103	URL	Download
---------------------------	-----	----------

ZUKEN Portal 786-103	URL	Download
----------------------	-----	----------

WSCAD Universe 786-103	URL	Download
------------------------	-----	----------

Subject to changes. Please also observe the further product documentation!

WAGO Kontakttechnik GmbH & Co. KG
Hansastr. 27
32423 Minden
Phone: +49571 887-0 | Fax: +49571 887-169
Email: info.de@wago.com | Web: www.wago.com

Do you have any questions about our products?
We are always happy to take your call at +49 (571) 887-44222.



Environmental Product Compliance

Compliance Search

Environmental Product Compliance 786-103

URL

Download

Empty component plug housing; Type 16; 25 mm wide; 10-pole; gray

Installation Notes

Subject to changes. Please also observe the further product documentation!

WAGO Kontakttechnik GmbH & Co. KG

Hansastr. 27

32423 Minden

Phone: +49571 887-0 | Fax: +49571 887-169

Email: info.de@wago.com | Web: www.wago.com

Do you have any questions about our products?

We are always happy to take your call at +49 (571) 887-44222.