

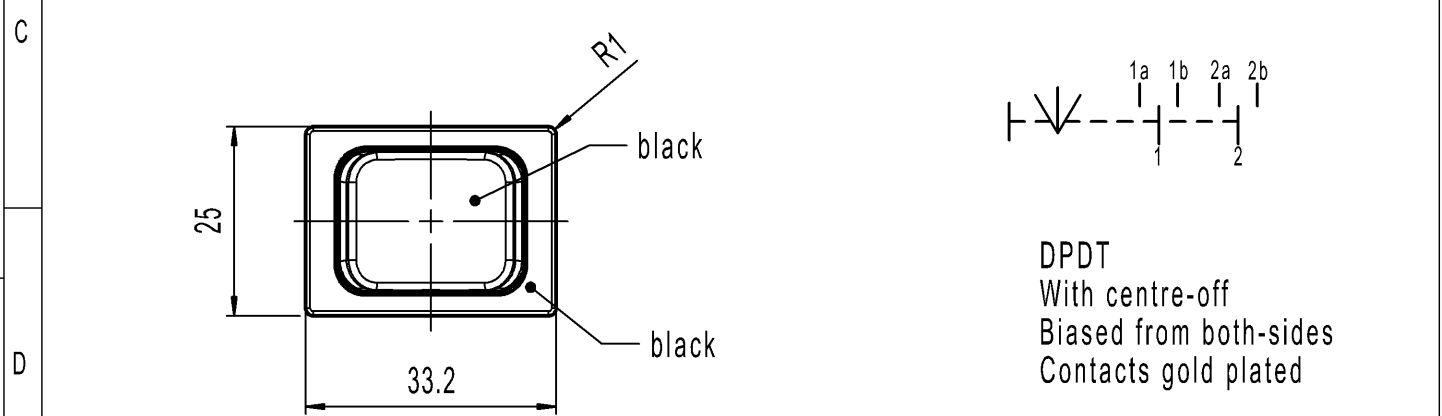
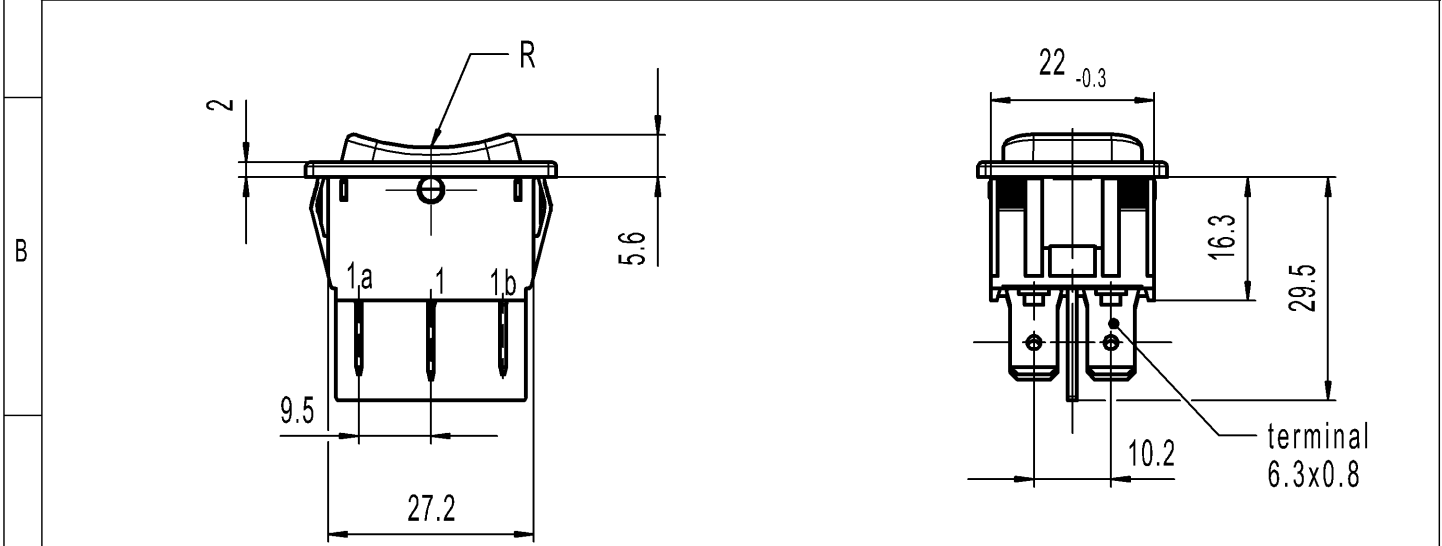
CONFIDENTIAL

VERTRAULICH

THIS DRAWING IS THE EXCLUSIVE PROPERTY OF MARQUARDT. WITHOUT THEIR CONSENT IT MAY NOT BE REPRODUCED OR GIVEN TO THIRD PARTIES.

Alle Rechte bei Marquardt, auch fuer den Fall von Schutzrechtsanmeldungen. Jede Veruegungsbefugnis, wie Kopier- und Weitergaberecht, bei uns.

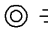
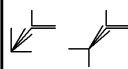
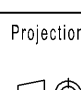

A	recommended cut-out for snap-in fixing (edge opposite to snap-in direction)	1	2	3	4
			wall thickness	length of cut-out	width of cut-out
			0.75 to 1.25	30 -0.1	22+0.2
			>1.25 to 2	30.2 -0.1	22+0.2
		>2 to 3	30.6 -0.1	22+0.2	



DPDT
With centre-off
Biased from both-sides
Contacts gold plated

Marking

 1839.
 30mA 12V +++
 Code of manufacture: place/year/week

-	-	-	1839.3352-XX
Figure	Type	Customer Part No.	Art.No.-PI
Shape and location	Angle $\pm 2^\circ$	Sheet 01	Ident. K
	Edge tolerance	Format DIN A4	Document number 18393352
 	Length	Projection 	Index b
	Radial	Scale 1:1	Appliance Switch
		All dimensions are in millimetres	
b	141196	2022-09-28	 MARQUARDT
a	64508	2009-08-27	
	27661	1999-05-03	
Index	MEC-No.	Date (YYYY-MM-DD)	
		Edited by	System NX V1899
			Replacement of
			Zg.gl.Nr.v.03.05.1999