

The logo for VOLTcraft, featuring the word "VOLTcraft" in a bold, italicized, red sans-serif font. A registered trademark symbol (®) is located at the end of the word.

## VOLTcraft® - TOP PERFORMANCE IN EVERY WAY

"For more than 25 years, our product range has been dynamically adapting to the constant changes in the industry. We commit to offering first-class quality to our customers while delivering an excellent cost-performance ratio. This philosophy remains the cornerstone of Voltcraft's success."

# DPM 314D

## DIGITAL THREE-PHASE ENERGY METER

CE  
VERSION 01/16

Nº 1386418

Digital four-wire three-phase energy meter for 35 mm DIN rail mounting in sub-distribution. The meter enables direct measurement of active energy up to 100 A / phase.

### FEATURES:

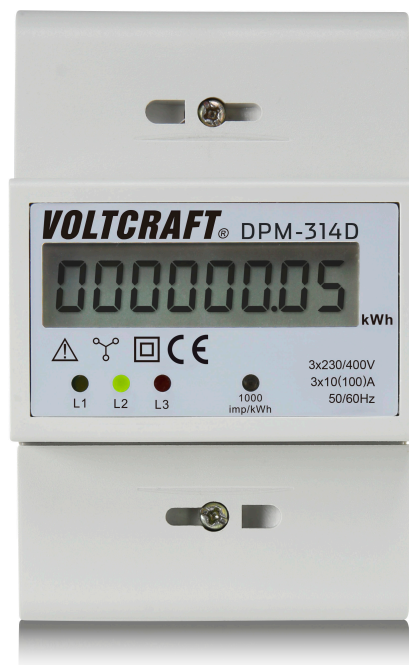
Up to 100 A direct measurement // For measuring active energy // With backstop //

### PACKAGE CONTENTS:

DPM-314D // 2 terminal covers // Operating instructions //

### TECHNICAL DATA:

Nominal voltage:	3 x 230/400 V/AC
Rated voltage range:	3 x 161 - 300 / 279 - 520 V/AC
Frequency:	50/60 Hz
Display active power consumption:	0.01 - 999999.99 kWh
Load current / phase:	10 (100) A
Current area / phase:	0.04 - 100 A
Start-up current:	0.04 A
Measurement type:	Direct measurement
Accuracy class:	1 (IEC 62053-21)
Power factor cos φ:	0.5 - 1
Pulse display:	1000 pulses / kWh
Self-consumption / phase:	<2 W
Protection class (front):	IP54
Mounting width:	4 TE (70 mm)
Product dimensions (W x H x L):	70 x 110 x 65 mm
Weight:	ca. 340 g



#### Legal notice

This data sheet is published by Conrad Electronic SE, Klaus-Conrad-Str. 1, D-92240 Hirschau (www.conrad.com). All rights including translation reserved. Reproduction by any method, e.g. photocopy, microfilming, or the capture in electronic data processing systems require the prior written approval by the editor. Reprinting, also in part, is prohibited. This data sheet represent the technical status at the time of printing.

© Copyright 2016 by Conrad Electronic SE

VL\_0116\_02/VTP