

LG LIGHTING TECHNICAL DATA

# LED LAMP A19

Designed to replace conventional incandescent lamps, LG LED BULB is simple, modern, and eco-friendly, as well as providing cost saving and long lifetime.



# LED LAMP A19

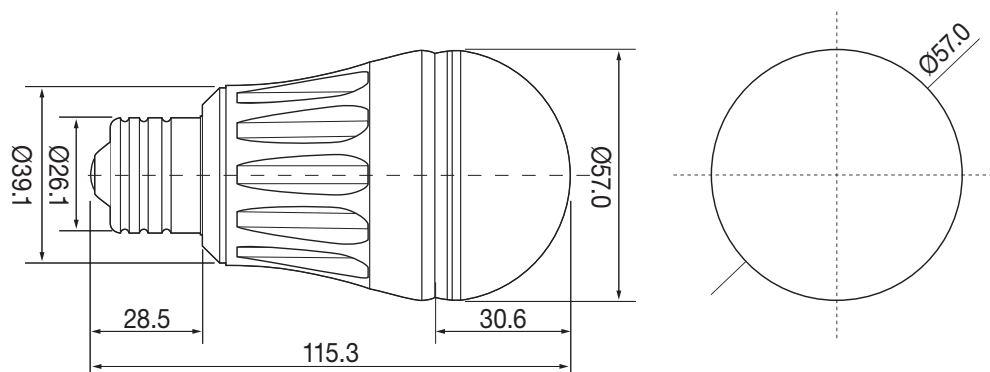


## Line-Up

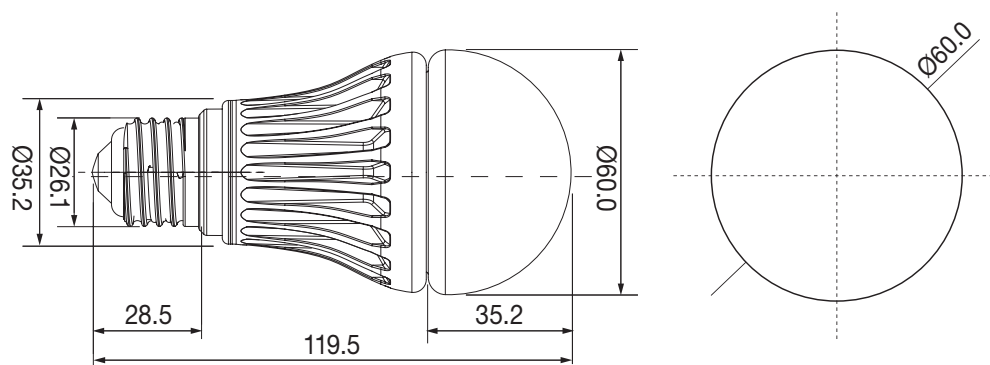
Model No.	Watts(W)	Dimension(mm)	Light Color(K)	Beam Angle(Degree)
LB06E730L0A.E00GSE0	6	Φ57 X 115.3(H)	3000	140
LB06E750L0A.E00GSE0	6	Φ57 X 115.3(H)	5000	140
LB08E827L0A.E20JWE0	7.5	Φ60 X 119.5(H)	2700	140
LB08E830L0A.E20JWE0	7.5	Φ60 X 119.5(H)	3000	140

## Drawing

6W



7.5W



## LED LAMP A19

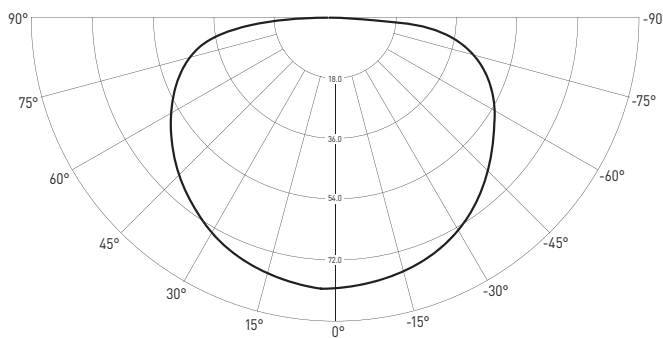


## LB06E730L0A.E00GSE0

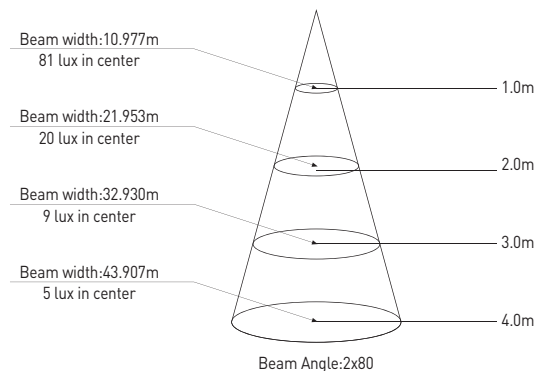
Category	Specifications	Unit
Watts	6	W
Lumens per Watt (Efficacy)	63	lm/W
Light Output	380	lm
Light Color (CCT)	3000	K
Beam Angle	140	° (degree)
Color Accuracy (CRI)	75	Ra
Product Weight	180	g
Rating Life	50,000	h
Base	E27	
Input Voltage (AC)	100 ~ 240	V

Item	Test Conditions	Min.	Typ.	Max.
Input Voltage (V, rms)	AC	190	220	240
Input Current (mA, rms)	AC(220V)	27.7	30.8	34.0
Input Power (W, rms)	AC(All)	6.0	6.4	6.9
Input Frequency (Hz)	AC	47	50	53
	AC	57	60	63
Power Factor	AC(All)	Min. 0.91		
Output Voltage (V)	DC	27.5	29.0	30.5
Output Current (mA)	DC	163	172	179
Output Power (W)	DC	4.44	4.93	5.44

## Luminance Intensity Distribution



## Cone Lux Diagram



## LED LAMP A19

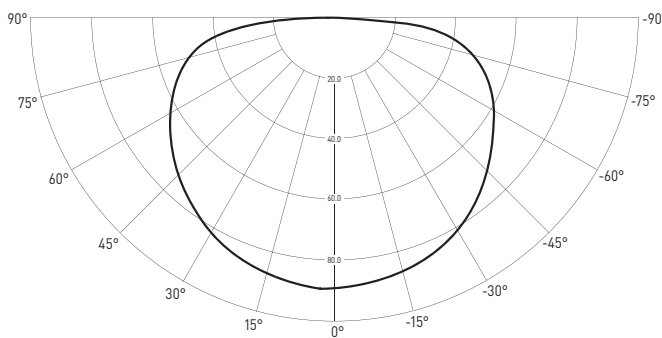


## LB06E750L0A.E00GSE0

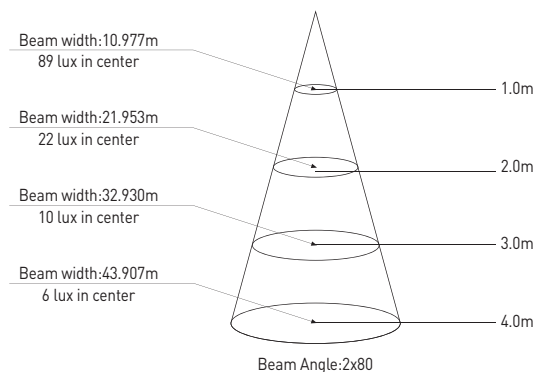
Category	Specifications	Unit
Watts	6	W
Lumens per Watt (Efficacy)	70	lm/W
Light Output	420	lm
Light Color (CCT)	5000	K
Beam Angle	140	° (degree)
Color Accuracy (CRI)	75	Ra
Product Weight	180	g
Rating Life	50,000	h
Base	E27	
Input Voltage (AC)	100 ~ 240	V

Item	Test Conditions	Min.	Typ.	Max.
Input Voltage (V, rms)	AC	190	220	240
Input Current (mA, rms)	AC(220V)	27.7	30.8	34.0
Input Power (W, rms)	AC(All)	6.0	6.4	6.9
Input Frequency (Hz)	AC	47	50	53
	AC	57	60	63
Power Factor	AC(All)	Min. 0.91		
Output Voltage (V)	DC	27.5	29.0	30.5
Output Current (mA)	DC	163	172	179
Output Power (W)	DC	4.44	4.93	5.44

## Luminance Intensity Distribution



## Cone Lux Diagram



## LED LAMP A19

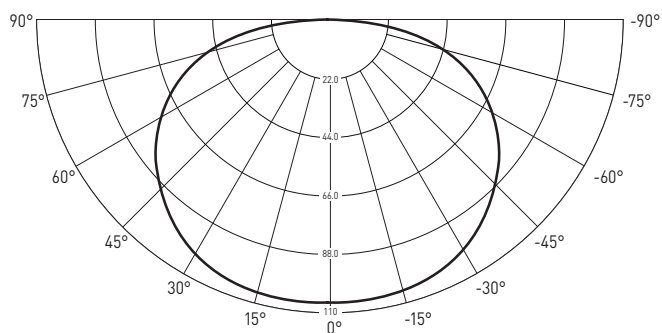


## LB08E827L0A.E20JWE0

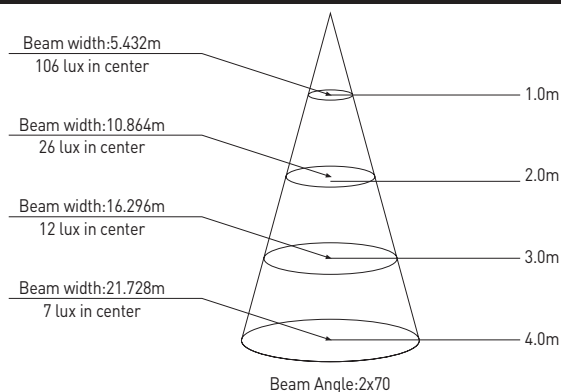
Category	Specifications	Unit
Watts	7.5	W
Lumens per Watt (Efficacy)	60	lm/W
Light Output	450	lm
Light Color (CCT)	2700	K
Beam Angle	140	° (degree)
Color Accuracy (CRI)	81	Ra
Product Weight	165	g
Rating Life	30,000	h
Base	E27	
Input Voltage (AC)	230	V

Item	Test Conditions	Min.	Typ.	Max.
Input Voltage (V, rms)	AC	198	220/230	242
Input Current (mA, rms)	AC(230V)	30.8	34.3	37.7
	AC(220V)	32.2	35.8	39.4
Input Power (W, rms)	AC(All)	6.75	7.5	8.25
Input Frequency (Hz)	AC	47	50/60	63
Power Factor	AC(All)	0.9 Above		
Output Voltage (V)	DC	23.56	24.8	26.0
Output Current (mA)	DC(24.8)	244	257	282.7
Output Power (W)	DC(All)	5.9	6.57	7.2

## Luminance Intensity Distribution



## Cone Lux Diagram



## LED LAMP A19

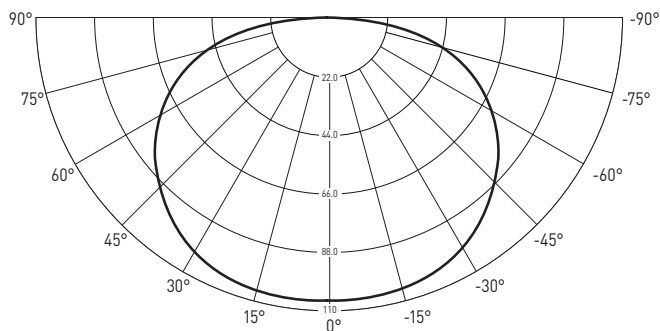


## LB08E830L0A.E20JWE0

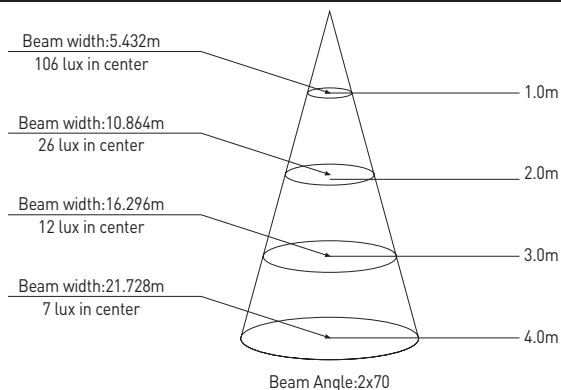
Category	Specifications	Unit
Watts	7.5	W
Lumens per Watt (Efficacy)	65	lm/W
Light Output	485	lm
Light Color (CCT)	3000	K
Beam Angle	140	° (degree)
Color Accuracy (CRI)	83	Ra
Product Weight	165	g
Rating Life	30,000	h
Base	E27	
Input Voltage (AC)	230	V

Item	Test Conditions	Min.	Typ.	Max.
Input Voltage (V, rms)	AC	198	220/230	242
Input Current (mA, rms)	AC(230V)	30.8	34.3	37.7
	AC(220V)	32.2	35.8	39.4
Input Power (W, rms)	AC(All)	6.75	7.5	8.25
Input Frequency (Hz)	AC	47	50/60	63
Power Factor	AC(All)	0.9 Above		
Output Voltage (V)	DC	23.56	24.8	26.0
Output Current (mA)	DC(24.8)	244	257	282.7
Output Power (W)	DC(All)	5.9	6.57	7.2

## Luminance Intensity Distribution



## Cone Lux Diagram



# LED LAMP A19



## User Manual

### SAFETY PRECAUTIONS

- ⚠ WARNING** • Violation of warnings may lead to serious injury or death.
- ⚠ CAUTION** • Violation of precautions may lead to minor injury or product damage.

#### ⚠ WARNING

- Do not install near inflammable objects or potential sources of fire, such as paper or cloth.
- Power must be turned off during installation, replacement, and cleaning. Only hold the product body to work (possible cause of electric execution).
- Do not use in places with risk of water inflow or in a high temperature environment.
- Do not arbitrarily dismantle or modify the product in case of breakdown.
- Make sure the product does not contact the hand or any parts of skin while the light is on or immediately after turning it off since it can be hot.
- Do not touch the product with wet hands.
- Do not apply the product to the voltage other than verified voltage of AC220-240V.
- Do not arbitrarily dismantle, repair, or modify the product.

#### ⚠ CAUTION

- Make sure to install or replace lamps compatible with the rated voltage.
- Do not use the product with lighting equipment with a dimming function.
- Please pay attention to potential damage while handling the product and keep away from moisture.
- Please remove contaminants before use since surface contamination could lower the brightness.
- Do not install the product to fixtures that are completely sealed or almost completely sealed.
- Make sure the power pin is completely inserted into the socket.
- Never connect to damaged equipment.
- Products that are confirmed to be damaged or malfunctioning from distribution process will be replaced with new products.
- This device is not intended for use with emergency exit.
- For lamps with a weight significantly higher than that of the lamps for which they are a replacement, attention should be drawn to the fact that the increased weight may reduce the mechanical stability of certain luminaires.
- Special conditions or restrictions which shall be observed for lamp operation, for example, operation in dimming circuits.
- Where lamps are not suitable for dimming, the following symbol may be used:

