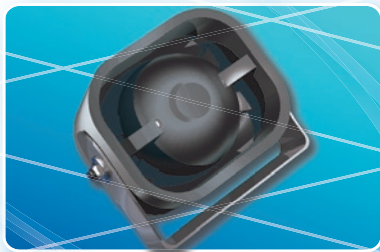


SAS-325A-6 MULTI TONE SIREN



The SAS-325A-6 is a universal electromagnetic siren with very high sound output. At 30cm the sound pressure level is about 123 dB(A). Six different alarm tones can be programmed by jumpers selection, which enables the user to choose and pre-select an alarm function for different application fields.

ADVANTAGES & APPLICATIONS

ADVANTAGES:

- Selectable alarm tones
- Siren with low frequency high sound pressure
- Universal mounting metal bracket included
- Dust tight (IP60)

APPLICATIONS:

- Outdoor & indoor warning system
- Evacuation alarm

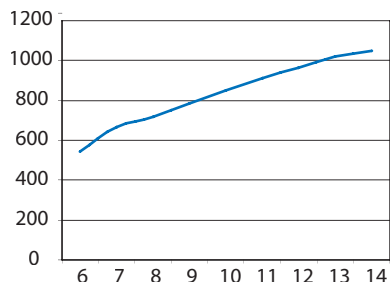
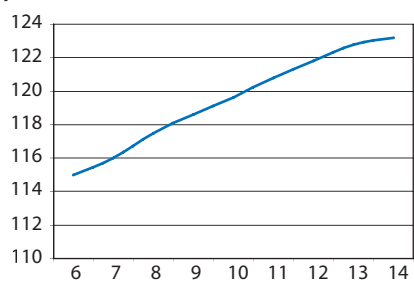
SPECIFICATIONS

Operating voltage:	12 version
Operating current:	12 version: 1A
Operating frequency:	depends on the tone you choose (6 tones available): Tone 1: Slow decreasing sweep: from 1500Hz down to 700Hz Tone 2: Red alert: sound composition 1800– 2800Hz Tone 3: Rising sweep (low to high tone): from 400Hz up to 900Hz Tone 4: Police siren: Alternating between 1000Hz and 1700Hz Tone 5: Fast low frequency sweep: from 1200Hz down to 700Hz Tone 6: Fast high frequency sweep: from 1200Hz up to 2700Hz Possibility to choose more than one tone in a sequence by inserting several jumpers at the back of the model or by selective electronic switching (optional on demand).
Alarm tones:	siren; 6 serial tones can be pre-selected with jumpers.
Sound output:	123dB(A) (± 3 dB(A) @30cm
Color:	black (or ivory if order quantity > 1000pcs)
Power cord:	length of 30cm (± 3 cm); AWG22
Case material:	ABS plastic
Weight:	334g 1pc/box; 30 pcs/inner box; 30 pcs/box Net weight/Gross weight/Measurement: 16.2kg/17kg/0.047m ³

**123 dB(A)
@ 30cm**

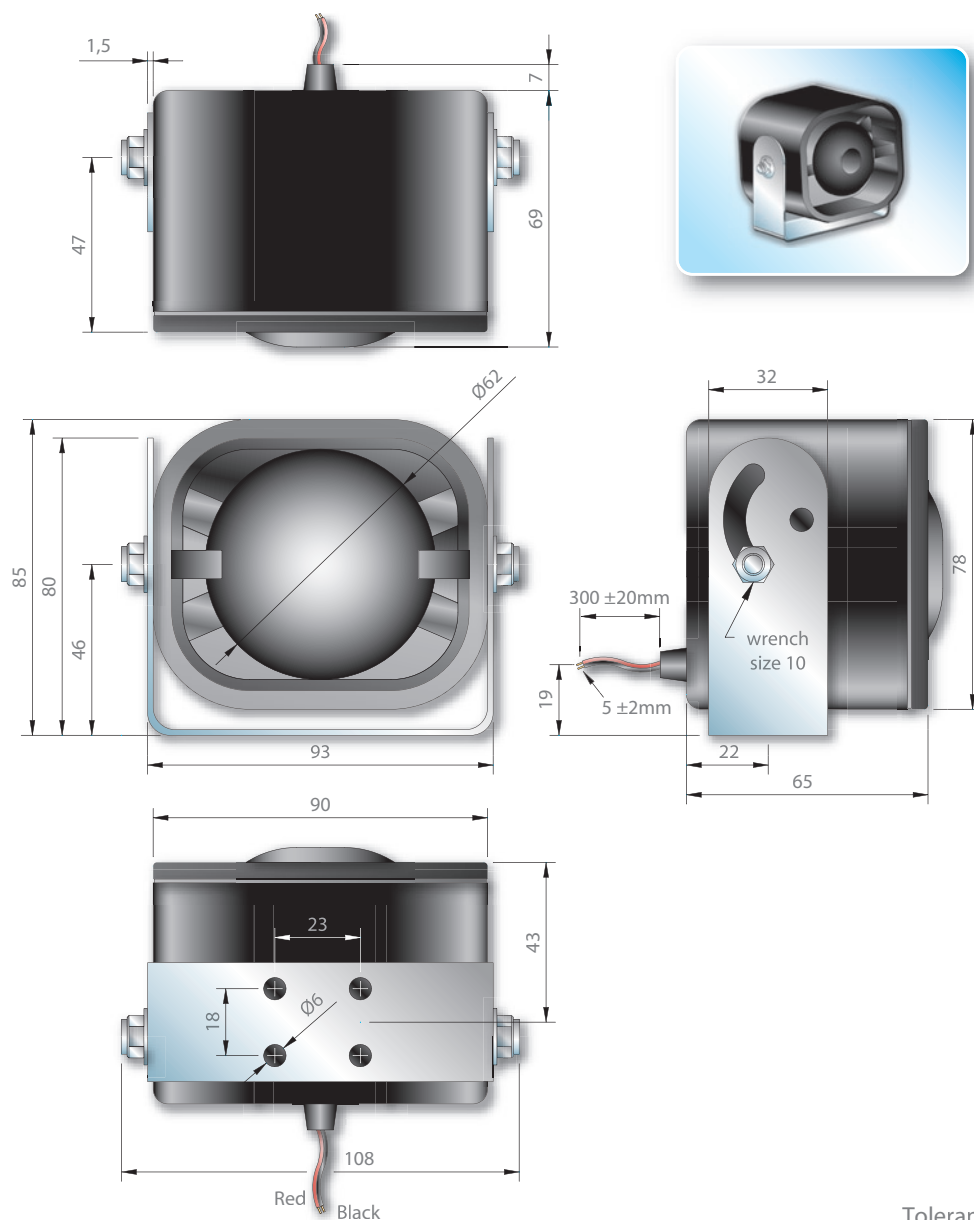


ELECTRICAL PARAMETERS

Model	Current consumption vs. operating voltage	Sound pressure level vs. operating voltage
SAS-325A-6	mA 	dB (A) 

Note : All measurements are made in free air @1 meter @21°C @35% RH.

DIMENSIONS (all dimensions are in mm)



Tolerance: ± 0.2 mm