

# 1760L

## TUBE GUITAR AMPLIFIER - OUTPUT TRANSFORMER

- Designed for drop in replacement of original units.
- Constructed to look similar to original factory units (where possible).
- Material used & design specifications were kept as close as possible to the original part to preserve the stock "tone".
- Open style with minimum 9" long primary and secondary leads
- Frequency response 70Hz - 15KHz (0/-1dB reference @ 1KHz)
- Distortion is less than 2% @ 70Hz

## ELECTRICAL SPECIFICATIONS

Characteristics		Typical
Input Impedance		4200 Ohms
Output Impedance		4, 8 & 16 Ohms
Output Power		50 W
<b>DCR</b>		
Primary Brown-Red		46.48 Ohm
Primary Red-Blue		51.04 Ohm
Secondary Green-Black		0.238 Ohm
Secondary Green-Yellow		0.405 Ohm
Secondary Green-White		0.578 Ohm
<b>Inductance</b>	<b>Impedance</b>	@ 1.0 kHz, 1.0 V OC
Primary Brown-Blue		5.72 H 36.4 KOhm
Secondary Green-Black		9.31 mH 66.26 Ohm
Secondary Green-Yellow		18.15 mH 126.85 Ohm
Secondary Green-White		34.23 mH 233.5 Ohm
<b>Leakage Inductance</b>		
Primary Brown-Blue		@ 1.0 kHz, 1.0 V SC 3.506 mH
<b>Dielectric Strength</b>		
Temperature Range		2828VDC -40 to 105 degC

## TEST CONDITIONS

Measurement instruments:

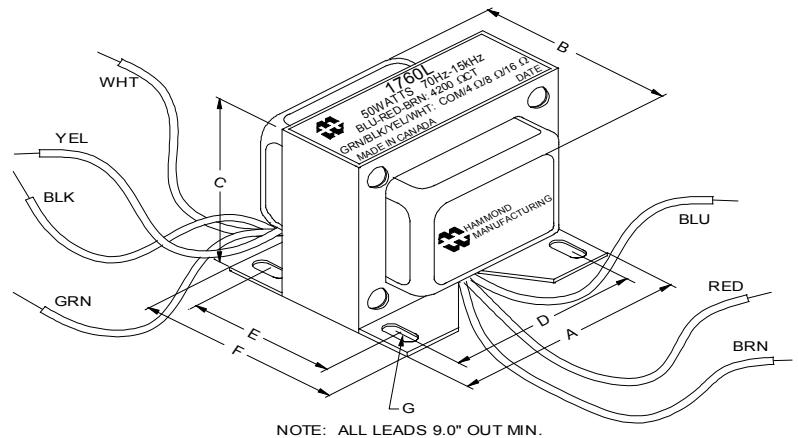
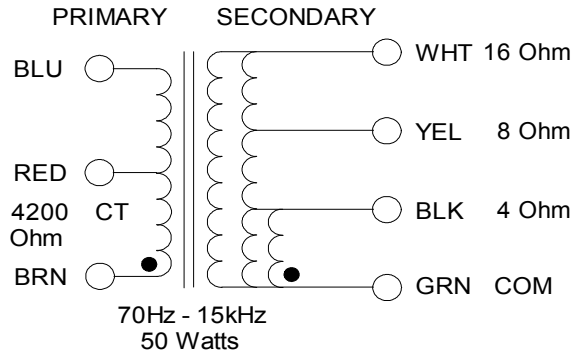
D scope series iii audio analyzer  
Wayne Kerr 3255B with a 3265B

Keithley 2010 DVM

Hp4192a impedance analyzer

\* All graphs input level 27dBu @1.0KHz reference.

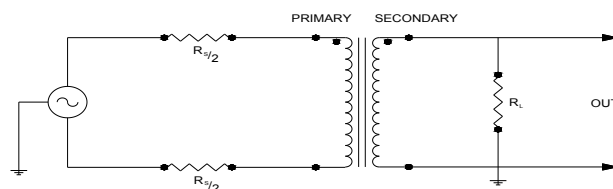
\*\*The results are typical and are subject to normal manufacturing and electrical tolerances.



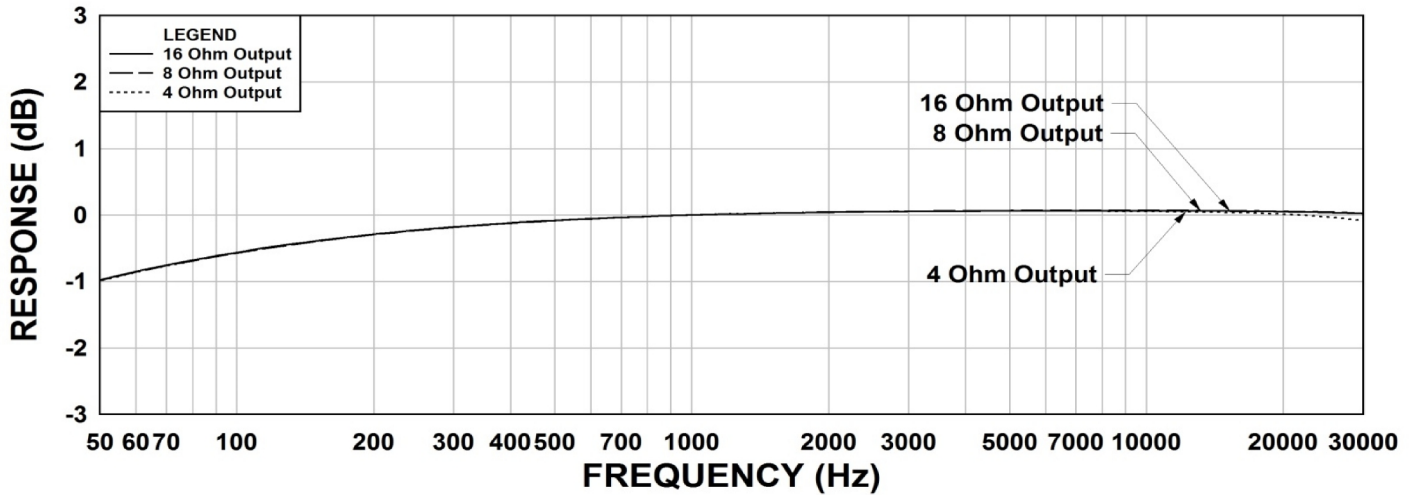
## Dimensions

A	4.063" ±0.063	E	1.955" ±0.063
B	3.150" ±0.125	F	2.480" ±0.063
C	3.500" ±0.063	G	0.180" X 0.300"
D	3.500" ±0.063		±0.015

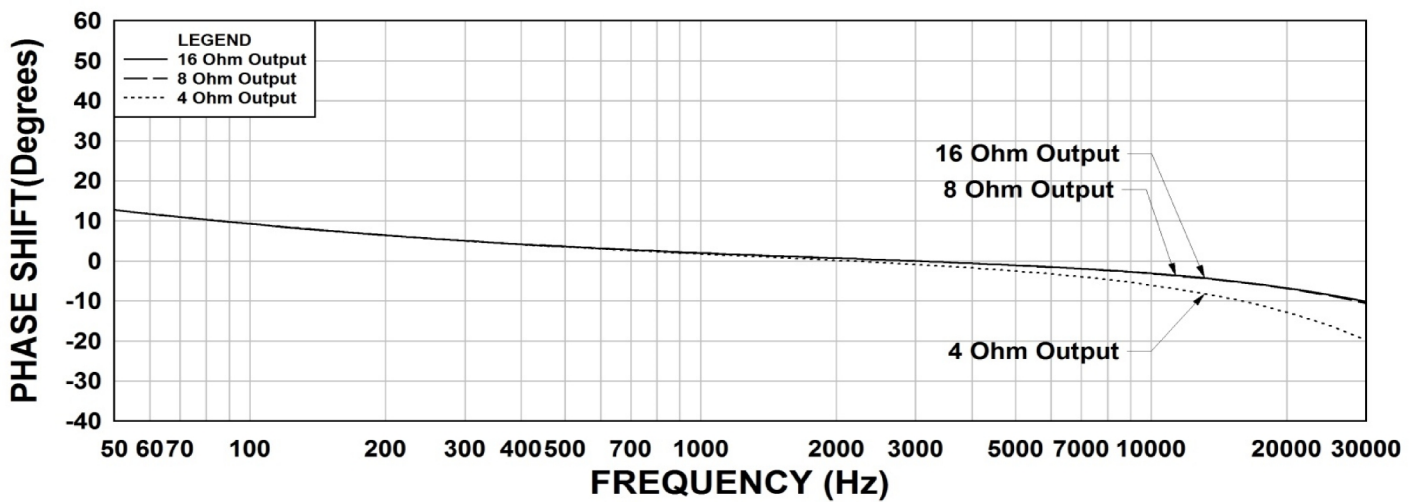
## TYPICAL TEST CIRCUIT



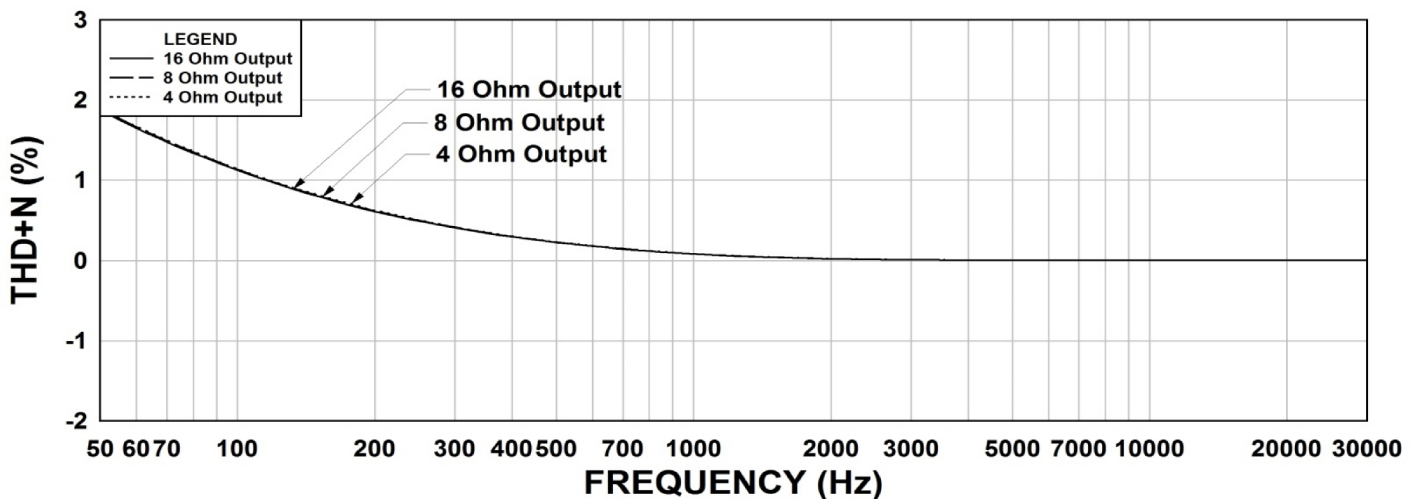
## 1760L Frequency Response RS = 4200 Ohms



## 1760L Phase Shift RS = 4200 Ohms



## 1760L THD+N RS = 4200 Ohms



This drawing and the information in it is the property of Hammond Manufacturing. It may not be reproduced, transmitted or used in any manner whatsoever without the written permission of Hammond Manufacturing. Data subject to change without notice.