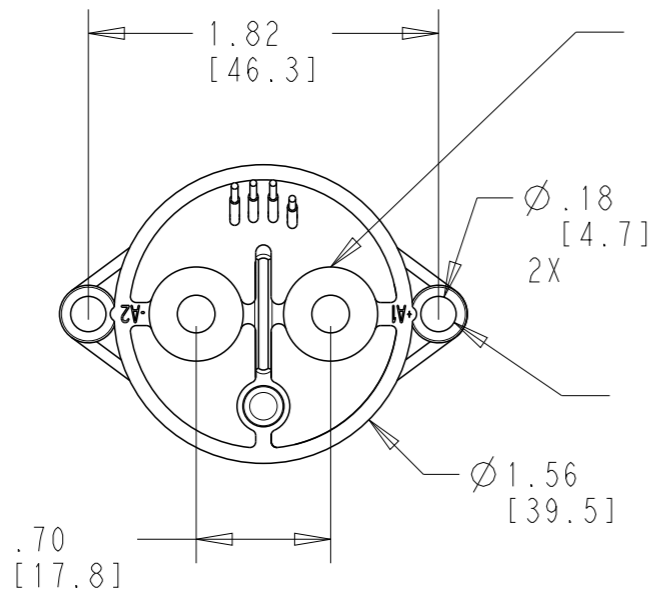


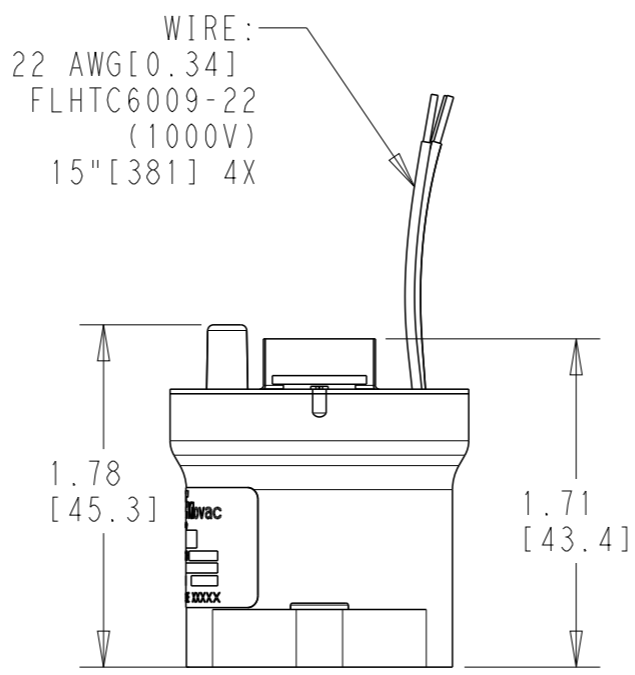
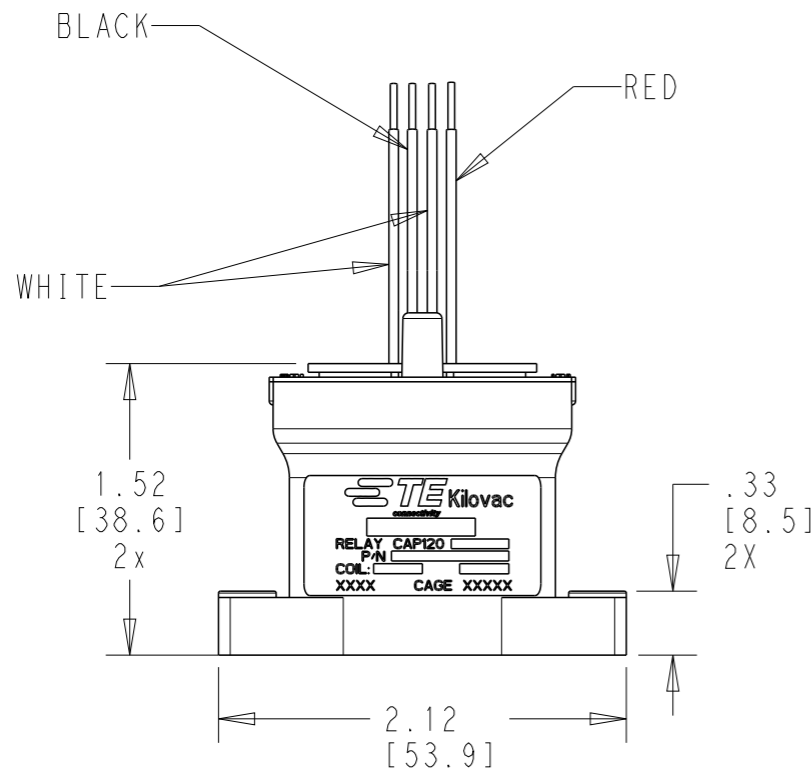
REVISIONS

P	LTR	DESCRIPTION	DATE	DWN	APVD
	B	ECN-22-142610	09MAR2022	SR	VSH



LOAD TERMINALS-2PLCS HARDWARE NOT SUPPLIED
 2 X M5 BOLTS, LOCKWASHER AND WASHER
 TORQUE: 30-40 IN-LBS [3.4 TO 4.5 NM]
 DEPTH: 6 THREADS MIN

MOUNTING HARDWARE (NOT SUPPLIED)
 2X M4 BOLT, LOCKWASHER AND WASHER
 TORQUE: 20 IN-LBS [2.3 NM] MAX.



NOTES:

1. RECOMMENDED CONDUCTOR SIZE:

<100A #8 AWG [10 MM SQ]
 >100A <=150A #4 AWG [25 MM SQ]

2. MAIN TERMINALS BIDIRECTIONAL FOR CARRY AND SWITCHING

THIS DRAWING IS A CONTROLLED DOCUMENT.		DWN	11JUL2020	TE Connectivity	
DIMENSIONS: IN[MM]		CHK	MP 7/11/20		
TOLERANCES UNLESS OTHERWISE SPECIFIED:		APVD	MP 7/11/20	NAME	
		PRODUCT SPEC		CONTACTOR, SPST-NO W/AUX CAP120RBXNG	
0 PLC ±- 1 PLC ±.1[2.54] 2 PLC ±.02[0.5] 3 PLC ± 4 PLC ± ANGLES ±-		APPLICATION SPEC		-	
MATERIAL SEE PROD DWG		WEIGHT	140 G	SIZE	A3
FINISH		CUSTOMER DRAWING		CAGE CODE	18741
				DRAWING NO	©-4-1618415-5
				RESTRICTED TO	-
				SCALE	1:1
				SHEET	1 OF 2
				REV	B

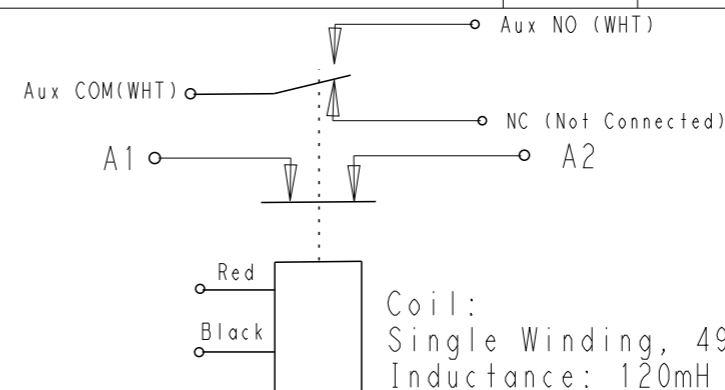
REVISIONS

P	LTR	DESCRIPTION	DATE	DWN	APVD
		SEE SHEET 1			

Physical Data	Units	CAP120RBXNG01
Contact Arrangements: Main Contacts		SPST-NO, Form P
Dimensions	Inches	See Drawing
Weight, Nominal	Kg	.14
Environmental Data		
Shock, 11ms 1/2 sine (operating)	G	15(Open)/30(Latched)
Sine Vibration, 20 G	Hz	55-2000
Random Vibration, 13.3 Grms (Closed) 9.1 Grms (Open)	Hz	15 100 450 900 2000 .002 .002 .12 .12 .083
Operating Temperature Range	°C	-40 to +85
Electrical Data		
Voltage Rating: Main Contact, Max	Vdc	600
Current Rating, Continuous: Main Contacts(1) Aux Contact (A/Vdc-Max) Aux Contact (A/Vdc-Min)	A A/Vdc A/Vdc	150A 100mA/6Vdc 5mA/5Vdc
Contact Resistance: Main Contacts Main Contact Voltage Drop @150A Aux Contact Voltage Drop @100mA	mΩ mV mV	0.6 max 80 150
Hot Switching performance, Resistive Load 100A make/break@600Vdc	cycles	1000
150A make/break@400Vdc	cycles	3250
1000A make/break@400Vdc	cycles	5
600A make/break@600Vdc	cycles	5
Pulse Through Closed Contacts, Maximum 600A make	A cycles	1250 25
Mechanical Life (min)	cycles	100,000
Dielectric Withstand Voltage		
Terminal to Terminal Terminals to Coil		1mA max @ 2800 Vrms 1mA max @ 1500 Vrms
Insulation resistance		
Terminal to Terminal/Terminals to Coil		100MΩ min @ 500Vdc new 50MΩ min @ 500Vdc end of life

(1) +85C Ambient with #4 AWG conductor. Keep relay terminals below 150 max continuous, 175C max for two hours, and 200C for 1 minute

Coil Data	Units	CAP120RBXNG01
Nominal Coil Voltage	Vdc	28
Latch/Reset (typ) @ 20C	Vdc	LATCH 10-18/RESET 10-18
Coil Resistance @ 20C +/-10%	Ω	49
Coil Inductance (typ)	mH	120
Coil Current (typical @ 28Vdc, 20C)	A	.57
Latch/Reset Pulse Time	ms	50-100
Operate Specs @ 20C		
Latch Time (typ)	ms	8
Latch Bounce (typ)	ms	3
Reset time (typ)	ms	7
Aux Contact Simultaneity with Main	ms	+/- 3



Coil:
Single Winding, 49 Ohms +/- 10% at 20C
Inductance: 120mH @100Hz

- Coil Drive:
- To Close: Connect Red lead to Source+
 - Connect Black lead to return for 50-100ms to Close (latch)
 - To Open: Connect Black Lead to Source+
 - Connect Red lead to return for 50-100ms to Open

Minimum Latch/Reset Voltage - 10Vdc

Coil/Aux Wire
FLHTC6009-22, 22AWG, 19x34 stranded, silver plated copper
1000V DC Rated

THIS DRAWING IS A CONTROLLED DOCUMENT.		DWN	11JUL2020		
DIMENSIONS: IN[MM]		CHK	MP 7/11/20		
TOLERANCES UNLESS OTHERWISE SPECIFIED:		APVD	MP 7/11/20	NAME	
0 PLC ±-		PRODUCT SPEC		CONTACTOR, SPST-NO W/AUX	
1 PLC ±.1[2.54]		APPLICATION SPEC		CAP120RBXNG	
2 PLC ±.02[0.5]		-		SIZE	A3
3 PLC ±		-		CAGE CODE	18741
4 PLC ±		-		DRAWING NO	④-4-1618415-5
ANGLES ±-		-		RESTRICTED TO	-
FINISH		WEIGHT		-	
SEE PROD DWG		140 G		SCALE	
-		CUSTOMER DRAWING		1:1	
				SHEET 2 OF 2	
				REV B	