

# UT 16 BK - Feed-through terminal block



3044197

<https://www.phoenixcontact.com/il/products/3044197>

Please be informed that the data shown in this PDF document is generated from our Online Catalog. Please find the complete data in the user documentation. Our General Terms of Use for Downloads are valid.



Feed-through terminal block, nom. voltage: 1000 V, nominal current: 76 A, connection method: Screw connection, Rated cross section: 16 mm<sup>2</sup>, cross section: 1.5 mm<sup>2</sup> - 25 mm<sup>2</sup>, mounting type: NS 35/7,5, NS 35/15, color: black

## Your advantages

- The reducing bridges can be used to connect terminal blocks with different connection technologies, e.g., UT 35 screw terminal block with Push-in technology 2,5 Push-in terminal blocks, to form power blocks
- The flexible options for reducing bridging in the CLIPLINE complete system can be found in "Accessories for the CLIPLINE complete modular terminal block system"
- Easy and time-saving potential supply and distribution of large currents and cross sections up to 35 mm<sup>2</sup> with reducing bridges
- Tested for railway applications

## Commercial Data

Item number	3044197
Packing unit	50 pc
Minimum order quantity	1 pc
Product Key	BE1111
GTIN	4055626055275
Weight per Piece (including packing)	30.583 g
Weight per Piece (excluding packing)	30.583 g
Customs tariff number	85369010
Country of origin	TR

# UT 16 BK - Feed-through terminal block



3044197

<https://www.phoenixcontact.com/il/products/3044197>

## Technical Data

### Product properties

Product type	Feed-through terminal block
Area of application	Railway industry
	Machine building
	Plant engineering
	Process industry
Number of connections	2
Number of rows	1
Potentials	1

### Insulation characteristics

Overvoltage category	III
Degree of pollution	3

### Electrical properties

Rated surge voltage	8 kV
Maximum power dissipation for nominal condition	2.43 W

### Connection data

Number of connections per level	2
Nominal cross section	16 mm <sup>2</sup>

### Level 1 above 1 below 1

Screw thread	M5
Tightening torque	2.5 ... 3 Nm
Stripping length	14 mm
Internal cylindrical gage	A7
Connection in acc. with standard	IEC 60947-7-1
Conductor cross section rigid	1.5 mm <sup>2</sup> ... 25 mm <sup>2</sup>
Cross section AWG	16 ... 4 (converted acc. to IEC)
Conductor cross section flexible	1.5 mm <sup>2</sup> ... 25 mm <sup>2</sup>
Conductor cross section, flexible [AWG]	16 ... 4 (converted acc. to IEC)
Conductor cross-section flexible (ferrule without plastic sleeve)	1 mm <sup>2</sup> ... 16 mm <sup>2</sup>
Flexible conductor cross section (ferrule with plastic sleeve)	1 mm <sup>2</sup> ... 16 mm <sup>2</sup>
2 conductors with same cross section, solid	1 mm <sup>2</sup> ... 6 mm <sup>2</sup>
2 conductors with same cross section, flexible	1 mm <sup>2</sup> ... 6 mm <sup>2</sup>
2 conductors with same cross section, flexible, with ferrule without plastic sleeve	1 mm <sup>2</sup> ... 6 mm <sup>2</sup>
2 conductors with the same cross section, flexible, with TWIN ferrule with plastic sleeve	0.75 mm <sup>2</sup> ... 10 mm <sup>2</sup>
Nominal current	76 A
Maximum load current	101 A (with 25 mm <sup>2</sup> conductor cross section)
Nominal voltage	1000 V

# UT 16 BK - Feed-through terminal block



3044197

<https://www.phoenixcontact.com/il/products/3044197>

Note	Note: Product releases, connection cross sections and notes on connecting aluminum cables can be found in the download area.
Nominal cross section	16 mm <sup>2</sup>

## Ex data

### Rated data (ATEX/IECEX)

Identification	□ II 2 GD Ex eb IIC Gb
Operating temperature range	-60 °C ... 110 °C
Ex-certified accessories	3047206 D-UT 16 1205066 SZS 1,0X4,0 VDE 3022276 CLIPFIX 35-5 3022218 CLIPFIX 35
List of bridges	Plug-in bridge / FBS 2-12 / 3005950
Bridge data	73.5 A / 16 mm <sup>2</sup>
Ex temperature increase	40 K (80.5 A / 16 mm <sup>2</sup> )
Rated voltage	690 V
for bridging with bridge	690 V
Rated insulation voltage	630 V
output	(Permanent)

### Ex level General

Rated current	73.5 A
Maximum load current	89.5 A
Contact resistance	0.16 mΩ

### Ex connection data General

Torque range	2.5 Nm ... 3 Nm
Nominal cross section	16 mm <sup>2</sup>
Rated cross section AWG	6
Connection capacity rigid	1.5 mm <sup>2</sup> ... 25 mm <sup>2</sup>
Connection capacity AWG	16 ... 4
Connection capacity flexible	1.5 mm <sup>2</sup> ... 16 mm <sup>2</sup>
Connection capacity AWG	16 ... 6
2 conductors with same cross section, solid	1 mm <sup>2</sup> ... 6 mm <sup>2</sup>
2 conductors with the same cross-section AWG rigid	18 ... 10
2 conductors with same cross section, stranded	1 mm <sup>2</sup> ... 4 mm <sup>2</sup>
2 conductors with the same cross-section AWG flexible	18 ... 12

## Dimensions

Width	12.2 mm
End cover width	2.2 mm
Height	54.4 mm
Height NS 35/15	62.5 mm
Height NS 35/7,5	55 mm
Length	55.5 mm

# UT 16 BK - Feed-through terminal block



3044197

<https://www.phoenixcontact.com/il/products/3044197>

## Material specifications

Color	black
Flammability rating according to UL 94	V0
Insulating material group	I
Insulating material	PA
Static insulating material application in cold	-60 °C
Temperature index of insulation material (DIN EN 60216-1 (VDE 0304-21))	130 °C
Relative insulation material temperature index (Elec., UL 746 B)	130 °C
Fire protection for rail vehicles (DIN EN 45545-2) R22	HL 1 - HL 3
Fire protection for rail vehicles (DIN EN 45545-2) R23	HL 1 - HL 3
Fire protection for rail vehicles (DIN EN 45545-2) R24	HL 1 - HL 3
Fire protection for rail vehicles (DIN EN 45545-2) R26	HL 1 - HL 3
Calorimetric heat release NFPA 130 (ASTM E 1354)	28 MJ/kg
Surface flammability NFPA 130 (ASTM E 162)	passed
Specific optical density of smoke NFPA 130 (ASTM E 662)	passed
Smoke gas toxicity NFPA 130 (SMP 800C)	passed

## Electrical tests

### Surge voltage test

Test voltage setpoint	9.8 kV
Result	Test passed

### Temperature-rise test

Requirement temperature-rise test	Increase in temperature $\leq$ 45 K
Result	Test passed
Short-time withstand current 16 mm <sup>2</sup>	1.92 kA
Result	Test passed

### Power-frequency withstand voltage

Test voltage setpoint	2.2 kV
Result	Test passed

## Mechanical properties

### Mechanical data

Open side panel	Yes
-----------------	-----

## Mechanical tests

### Mechanical strength

Result	Test passed
--------	-------------

### Attachment on the carrier

DIN rail/fixing support	NS 32/NS 35
Result	Test passed

# UT 16 BK - Feed-through terminal block



3044197

<https://www.phoenixcontact.com/il/products/3044197>

## Test for conductor damage and slackening

Rotation speed	10 rpm
Revolutions	135
Conductor cross section/weight	1.5 mm <sup>2</sup> / 0.4 kg
	16 mm <sup>2</sup> / 2.9 kg
	25 mm <sup>2</sup> / 4.5 kg
Result	Test passed

## Environmental and real-life conditions

### Needle-flame test

Time of exposure	30 s
Result	Test passed

### Oscillation/broadband noise

Specification	DIN EN 50155 (VDE 0115-200):2018-05
Spectrum	Service life test category 2, bogie-mounted
Frequency	$f_1 = 5 \text{ Hz}$ to $f_2 = 250 \text{ Hz}$
ASD level	6.12 (m/s <sup>2</sup> ) <sup>2</sup> /Hz
Acceleration	3.12g
Test duration per axis	5 h
Test directions	X-, Y- and Z-axis

### Shocks

Pulse shape	Half-sine
Acceleration	30g
Shock duration	18 ms
Number of shocks per direction	3
Test directions	X-, Y- and Z-axis (pos. and neg.)

### Ambient conditions

Ambient temperature (operation)	-60 °C ... 105 °C (max. short-term operating temperature RTI Elec.)
Ambient temperature (storage/transport)	-25 °C ... 60 °C (for a short time, not exceeding 24 h, -60 °C to +70 °C)
Ambient temperature (assembly)	-5 °C ... 70 °C
Ambient temperature (actuation)	-5 °C ... 70 °C
Permissible humidity (storage/transport)	30 % ... 70 %

## Standards and regulations

Connection in acc. with standard	IEC 60947-7-1
----------------------------------	---------------

## Mounting

Mounting type	NS 35/7,5
	NS 35/15

# UT 16 BK - Feed-through terminal block

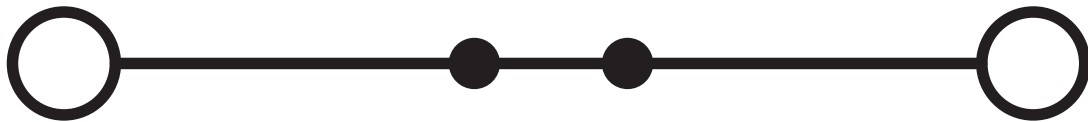
3044197

<https://www.phoenixcontact.com/il/products/3044197>



## Drawings

Circuit diagram




# UT 16 BK - Feed-through terminal block




3044197


<https://www.phoenixcontact.com/il/products/3044197>

## Approvals


 <b>CSA</b> Approval ID: 13631				
	Nominal Voltage $U_N$	Nominal Current $I_N$	Cross Section AWG	Cross Section $mm^2$
Use group B	600 V	85 A	16 - 4	-
Use group C	600 V	85 A	16 - 4	-

 <b>IECEE CB Scheme</b> Approval ID: DE1-65779				
	Nominal Voltage $U_N$	Nominal Current $I_N$	Cross Section AWG	Cross Section $mm^2$
	1000 V	76 A	-	- 16

 <b>EAC</b> Approval ID: RU C-DE.AI30.B.01102				
---	--	--	--	--

 <b>cULus Recognized</b> Approval ID: E60425				
	Nominal Voltage $U_N$	Nominal Current $I_N$	Cross Section AWG	Cross Section $mm^2$
Use group B	600 V	85 A	16 - 4	-
Multi-conductor connection	600 V	85 A	- 14	-
Use group C	600 V	85 A	16 - 4	-
Multi-conductor connection	600 V	85 A	- 14	-

 <b>LR</b> Approval ID: LR2003762TA				
---	--	--	--	--

 <b>RS</b> Approval ID: 22.44.01.00083.250				
--	--	--	--	--

 <b>VDE Zeichengenehmigung</b> Approval ID: 40020166				
	Nominal Voltage $U_N$	Nominal Current $I_N$	Cross Section AWG	Cross Section $mm^2$
	1000 V	76 A	-	1.5 - 16

# UT 16 BK - Feed-through terminal block



3044197

<https://www.phoenixcontact.com/il/products/3044197>



## ATEX

Approval ID: KEMA04ATEX2048U



## cUL Recognized

Approval ID: E192998

	Nominal Voltage $U_N$	Nominal Current $I_N$	Cross Section AWG	Cross Section $\text{mm}^2$
	600 V	85 A	16 - 4	-



## EAC Ex

Approval ID: RU C-DE.HA91.B.00066



## IECEx

Approval ID: IECEx KEM 06.0027U



## UL Recognized

Approval ID: E192998

	Nominal Voltage $U_N$	Nominal Current $I_N$	Cross Section AWG	Cross Section $\text{mm}^2$
	600 V	85 A	16 - 4	-



## CCC

Approval ID: 2020322313000622



## NEPSI

Approval ID: GYJ20.1194U



## UKCA-EX

Approval ID: DEKRA 21UKEX0304U



# UT 16 BK - Feed-through terminal block



3044197

<https://www.phoenixcontact.com/il/products/3044197>

## Classifications

### ECLASS

ECLASS-11.0

27141120

### ETIM

ETIM 8.0

EC000897

### UNSPSC

UNSPSC 21.0

39121400

# UT 16 BK - Feed-through terminal block



3044197

<https://www.phoenixcontact.com/il/products/3044197>

## Environmental Product Compliance

China RoHS	Environmentally friendly use period: unlimited = EFUP-e
	No hazardous substances above threshold values

# UT 16 BK - Feed-through terminal block

3044197

<https://www.phoenixcontact.com/il/products/3044197>

## Accessories

**i** Note: Applying some accessories below might limit this product.

### FBS 2-12 - Plug-in bridge

3005950

<https://www.phoenixcontact.com/il/products/3005950>



Plug-in bridge, pitch: 12 mm, number of positions: 2, color: red

**i** Max. current carrying capacity: 76 A

---

### RB 35-16 - Reducing bridge

3032169

<https://www.phoenixcontact.com/il/products/3032169>



Reducing bridge, pitch: 14 mm, number of positions: 2, color: red

**i** Max. current carrying capacity: 90 A

# UT 16 BK - Feed-through terminal block

3044197

<https://www.phoenixcontact.com/il/products/3044197>


## RB 16-6 - Reducing bridge

3047072

<https://www.phoenixcontact.com/il/products/3047072>



Reducing bridge, pitch: 12.2 mm, number of positions: 2, color: red

 Max. current carrying capacity: 37 A

---


## RB UT 16-(2,5/4) - Reducing bridge

3047073

<https://www.phoenixcontact.com/il/products/3047073>



Reducing bridge, pitch: 11 mm, number of positions: 2, length: 31 mm, color: red

 Max. current carrying capacity: 40 A

# UT 16 BK - Feed-through terminal block

3044197

<https://www.phoenixcontact.com/il/products/3044197>



## RB UT 16-ST(2,5/4) - Reducing bridge

3047099

<https://www.phoenixcontact.com/il/products/3047099>



Reducing bridge, pitch: 11 mm, number of positions: 2, length: 41 mm, color: red

 Max. current carrying capacity: 40 A

---

## AGK 4-UT 16 - Pick-off terminal block

3047125

<https://www.phoenixcontact.com/il/products/3047125>



Pick-off terminal block, nom. voltage: 1000 V, nominal current: 32 A, connection method: Screw connection, cross section:  $0.14 \text{ mm}^2 - 6 \text{ mm}^2$ , mounting type: on base element, color: gray

# UT 16 BK - Feed-through terminal block

3044197

<https://www.phoenixcontact.com/il/products/3044197>

## D-UT 16 - End cover

3047206

<https://www.phoenixcontact.com/il/products/3047206>



End cover, length: 52.8 mm, width: 2.2 mm, height: 47.3 mm, color: gray

---

## TPNS-UK - Partition plate

0706647

<https://www.phoenixcontact.com/il/products/0706647>



Partition plate, length: 80 mm, width: 2 mm, height: 70 mm, color: gray

# UT 16 BK - Feed-through terminal block

3044197

<https://www.phoenixcontact.com/il/products/3044197>

## X-PEN 0,35 - Marker pen

0811228

<https://www.phoenixcontact.com/il/products/0811228>



Marker pen without ink cartridge, for manual labeling of markers, labeling extremely wipe-proof, line thickness 0.35 mm

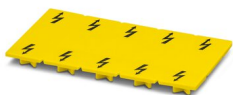
---

## WS UT 16 - Warning label

3047374

<https://www.phoenixcontact.com/il/products/3047374>

Warning sign for UT terminal blocks



# UT 16 BK - Feed-through terminal block

3044197

<https://www.phoenixcontact.com/il/products/3044197>



## SZS 1,0X6,5 VDE - Screwdriver

1205079

<https://www.phoenixcontact.com/il/products/1205079>



Screwdriver, slot-headed, VDE insulated, size: 1.0 x 6.5 x 150 mm, 2-component grip, with non-slip grip

---

## NS 35/ 7,5 PERF 2000MM - DIN rail perforated

0801733

<https://www.phoenixcontact.com/il/products/0801733>



DIN rail perforated, acc. to EN 60715, material: Steel, galvanized, passivated with a thick layer, Standard profile, color: silver, Pack of 25 (50 m)



# UT 16 BK - Feed-through terminal block

3044197

<https://www.phoenixcontact.com/il/products/3044197>



## NS 35/ 7,5 UNPERF 2000MM - DIN rail, unperforated

0801681

<https://www.phoenixcontact.com/il/products/0801681>



DIN rail, unperforated, acc. to EN 60715, material: Steel, galvanized, passivated with a thick layer, Standard profile, color: silver, Pack of 25 (50 m)

---

## NS 35/ 7,5 WH PERF 2000MM - DIN rail perforated

1204119

<https://www.phoenixcontact.com/il/products/1204119>



DIN rail perforated, acc. to EN 60715, material: Steel, Galvanized, white passivated, Standard profile, color: silver, Pack of 25 (50 m)

# UT 16 BK - Feed-through terminal block

3044197

<https://www.phoenixcontact.com/il/products/3044197>



## NS 35/ 7,5 WH UNPERF 2000MM-VPE 10 - DIN rail, unperforated

1204122

<https://www.phoenixcontact.com/il/products/1204122>



DIN rail, unperforated, acc. to EN 60715, material: Steel, Galvanized, white passivated, Standard profile, color: silver, Pack of 10 (20 m)

---

## NS 35/ 7,5 AL UNPERF 2000MM - DIN rail, unperforated

0801704

<https://www.phoenixcontact.com/il/products/0801704>



DIN rail, unperforated, acc. to EN 60715, material: Aluminum, uncoated, Standard profile, color: silver, Pack of 25 (50 m)

# UT 16 BK - Feed-through terminal block

3044197

<https://www.phoenixcontact.com/il/products/3044197>



## NS 35/ 7,5 ZN PERF 2000MM - DIN rail perforated

1206421

<https://www.phoenixcontact.com/il/products/1206421>



DIN rail perforated, acc. to EN 60715, material: Steel, galvanized, Standard profile, color: silver, Pack of 25 (50 m)

---

## NS 35/ 7,5 ZN UNPERF 2000MM - DIN rail, unperforated

1206434

<https://www.phoenixcontact.com/il/products/1206434>



DIN rail, unperforated, acc. to EN 60715, material: Steel, galvanized, Standard profile, color: silver, Pack of 25 (50 m)

# UT 16 BK - Feed-through terminal block

3044197

<https://www.phoenixcontact.com/il/products/3044197>



## NS 35/ 7,5 CU UNPERF 2000MM-VPE 10 - DIN rail, unperforated

0801762

<https://www.phoenixcontact.com/il/products/0801762>



DIN rail, unperforated, acc. to EN 60715, material: Copper, uncoated, Standard profile, color: copper-colored, Pack of 10 (20 m)

---

## NS 35/ 7,5 CAP - End cap

1206560

<https://www.phoenixcontact.com/il/products/1206560>

DIN rail end piece, for DIN rail NS 35/7.5



# UT 16 BK - Feed-through terminal block

3044197

<https://www.phoenixcontact.com/il/products/3044197>



## NS 35/15 PERF 2000MM - DIN rail perforated

1201730

<https://www.phoenixcontact.com/il/products/1201730>



DIN rail perforated, similar to EN 60715, material: Steel, galvanized, passivated with a thick layer, Standard profile, color: silver, Pack of 25 (50 m)

---

## NS 35/15 UNPERF 2000MM - DIN rail, unperforated

1201714

<https://www.phoenixcontact.com/il/products/1201714>



DIN rail, unperforated, similar to EN 60715, material: Steel, galvanized, passivated with a thick layer, Standard profile, color: silver, Pack of 25 (50 m)

# UT 16 BK - Feed-through terminal block

3044197

<https://www.phoenixcontact.com/il/products/3044197>



## NS 35/15 WH PERF 2000MM - DIN rail perforated

0806602

<https://www.phoenixcontact.com/il/products/0806602>



DIN rail perforated, similar to EN 60715, material: Steel, Galvanized, white passivated, Standard profile, color: white, Pack of 25 (50 m)

---

## NS 35/15 WH UNPERF 2000MM-VPE 10 - DIN rail, unperforated

1204135

<https://www.phoenixcontact.com/il/products/1204135>



DIN rail, unperforated, similar to EN 60715, material: Steel, Galvanized, white passivated, Standard profile, color: silver, Pack of 10 (20 m)

# UT 16 BK - Feed-through terminal block

3044197

<https://www.phoenixcontact.com/il/products/3044197>



## NS 35/15 AL UNPERF 2000MM - DIN rail, unperforated

1201756

<https://www.phoenixcontact.com/il/products/1201756>



DIN rail, unperforated, similar to EN 60715, material: Aluminum, uncoated, Standard profile, color: silver

---

## NS 35/15 ZN PERF 2000MM - DIN rail perforated

1206599

<https://www.phoenixcontact.com/il/products/1206599>



DIN rail perforated, similar to EN 60715, material: Steel, galvanized, Standard profile, color: silver, Pack of 25 (50 m)

# UT 16 BK - Feed-through terminal block

3044197

<https://www.phoenixcontact.com/il/products/3044197>



## NS 35/15 ZN UNPERF 2000MM - DIN rail, unperforated

1206586

<https://www.phoenixcontact.com/il/products/1206586>



DIN rail, unperforated, similar to EN 60715, material: Steel, galvanized, Standard profile, color: silver, Pack of 25 (50 m)

---

## NS 35/15 CU UNPERF 2000MM-VPE 10 - DIN rail, unperforated

1201895

<https://www.phoenixcontact.com/il/products/1201895>



DIN rail, unperforated, similar to EN 60715, material: Copper, uncoated, Standard profile, color: copper-colored, Pack of 10 (20 m)



# UT 16 BK - Feed-through terminal block

3044197

<https://www.phoenixcontact.com/il/products/3044197>



## NS 35/15 CAP - End cap

1206573

<https://www.phoenixcontact.com/il/products/1206573>

DIN rail end piece, for DIN rail NS 35/15



---

## NS 35/15-2,3 UNPERF 2000MM-VPE 10 - DIN rail, unperforated

1201798

<https://www.phoenixcontact.com/il/products/1201798>



DIN rail, unperforated, acc. to EN 60715, material: Steel, galvanized, passivated with a thick layer, Standard profile 2.3 mm, color: silver, Pack of 10 (20 m)

# UT 16 BK - Feed-through terminal block

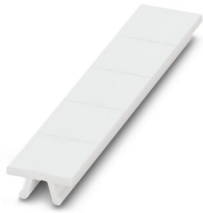
3044197

<https://www.phoenixcontact.com/il/products/3044197>

## ZB 12:UNPRINTED - Zack marker strip

0812120

<https://www.phoenixcontact.com/il/products/0812120>



Zack marker strip, Strip, white, unlabeled, can be labeled with: PLOTMARK, CMS-P1-PLOTTER, mounting type: snapped, for terminal block width: 12.2 mm, lettering field size: 12 x 10.5 mm, Number of individual labels: 5

---

## ZB 12 CUS - Zack marker strip

0824942

<https://www.phoenixcontact.com/il/products/0824942>



Zack marker strip, can be ordered: Strip, white, labeled according to customer specifications, mounting type: snap into tall marker groove, for terminal block width: 12.2 mm, lettering field size: 10.5 x 12.15 mm, Number of individual labels: 5

# UT 16 BK - Feed-through terminal block



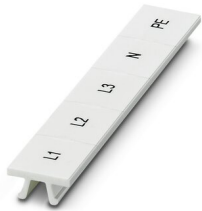
3044197

<https://www.phoenixcontact.com/il/products/3044197>

## ZB 12,LGS:L1-N,PE - Zack marker strip

0812146

<https://www.phoenixcontact.com/il/products/0812146>



Zack marker strip, Strip, white, labeled, printed horizontally: L1, L2, L3, N, PE, mounting type: snapped, for terminal block width: 12.2 mm, lettering field size: 10.5 x 12.15 mm, Number of individual labels: 5

---

## UC-TM 12 - Marker for terminal blocks

0819194

<https://www.phoenixcontact.com/il/products/0819194>



Marker for terminal blocks, Sheet, white, unlabeled, can be labeled with: BLUEMARK ID COLOR, BLUEMARK ID, BLUEMARK CLED, PLOTMARK, CMS-P1-PLOTTER, mounting type: snapped, for terminal block width: 12 mm, lettering field size: 11.45 x 10.5 mm, Number of individual labels: 40

## UT 16 BK - Feed-through terminal block

3044197

<https://www.phoenixcontact.com/il/products/3044197>



## UC-TM 12 CUS - Marker for terminal blocks

0824613

<https://www.phoenixcontact.com/il/products/0824613>



Marker for terminal blocks, can be ordered: by sheet, white, labeled according to customer specifications, mounting type: snap into tall marker groove, for terminal block width: 12 mm, lettering field size: 11.45 x 10.5 mm, Number of individual labels: 40

---

## UCT-TM 12 - Marker for terminal blocks

0829144

<https://www.phoenixcontact.com/il/products/0829144>



Marker for terminal blocks, Sheet, white, unlabeled, can be labeled with: TOPMARK NEO, TOPMARK LASER, BLUEMARK ID COLOR, BLUEMARK ID, BLUEMARK CLED, THERMOMARK PRIME, THERMOMARK CARD 2.0, THERMOMARK CARD, mounting type: snapped, for terminal block width: 12 mm, lettering field size: 10.8 x 9.6 mm, Number of individual labels: 30

## UT 16 BK - Feed-through terminal block

3044197

<https://www.phoenixcontact.com/il/products/3044197>



## UCT-TM 12 CUS - Marker for terminal blocks

0829630

<https://www.phoenixcontact.com/il/products/0829630>



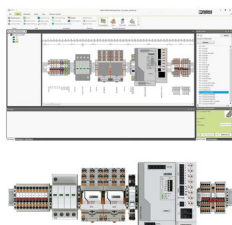
Marker for terminal blocks, can be ordered: by sheet, white, labeled according to customer specifications, mounting type: snap into tall marker groove, for terminal block width: 12 mm, lettering field size: 10.8 x 9.6 mm, Number of individual labels: 30

---

## PROJECT COMPLETE - Software

1050453

<https://www.phoenixcontact.com/il/products/1050453>



Intuitive planning and marking software for configuring terminal strips and for professional marking of marking materials for terminal blocks, conductors, cables, devices, and systems. The software is available for download

# UT 16 BK - Feed-through terminal block

3044197

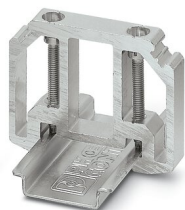
<https://www.phoenixcontact.com/il/products/3044197>



## E/AL-NS 35 - End clamp

1201662

<https://www.phoenixcontact.com/il/products/1201662>



End clamp, for end support of UKH 50 to UKH 240, is pushed onto DIN rail NS 35 and fixed with 2 screws, width: 10 mm, color: aluminum

---

Phoenix Contact 2023 © - all rights reserved

<https://www.phoenixcontact.com>

PHOENIX CONTACT Israel Ltd.  
P.O.B. 1799 Industrial Park Hasharon  
Quadima 60920  
+972-9-8915700  
[info@phoenixcontact.co.il](mailto:info@phoenixcontact.co.il)